

Mild to moderate proteinuria is a heralding sign for acute kidney injury and mortality for intensive care unit patients

Hasan H. YETER^{1*}, Tolga YILDIRIM², Damla EYÜPOĞLU³, Tural PAŞAYEV³, Abdullah ASLAN³,
Sıla ÇETİK³, Ömer AKÇAY⁴, Arzu TOPELİ⁵, Mustafa ARICI²

¹Department of Nephrology, Faculty of Medicine, Gazi University, Ankara, Turkey

²Department of Nephrology, Faculty of Medicine, Hacettepe University, Ankara, Turkey

³Department of Internal Medicine, Faculty of Medicine, Hacettepe University, Ankara, Turkey

⁴Department of Internal Medicine, Zekai Tahiri Burak Hospital, Ankara, Turkey

⁵Intensive Care Unit, Faculty of Medicine, Hacettepe University, Ankara, Turkey

Received: 25.02.2018 • Accepted/Published Online: 30.01.2019 • Final Version: 18.04.2019

Background/aim: Lack of early predictors of acute kidney injury is currently delaying timely diagnosis. This study was done to evaluate the relationship between mild to moderate proteinuria and incidence of acute kidney injury (AKI) and 28-day mortality in intensive care unit (ICU) patients.

Material and methods: This observational, retrospective study was conducted in the internal medicine ICU. A total of 796 patients were screened and 525 patients were used for this analysis. Proteinuria was measured by urine dipstick test. AKI was defined according to the Kidney Disease: Improving Global Outcomes (KDIGO) guidelines.

Results: Patients with dipstick urine protein positivity on admission had higher proportion of AKI and 28-day mortality compared to dipstick urine protein negative group [164 (59.6%) vs. 111 (44.4%) and 101 (36.7%) vs. 54 (21.6%), $P = 0.01$ and $P < 0.01$, respectively]. Urine dipstick protein positivity was also a significant predictor of 28-day mortality in patients with GFR > 60 mL/min (hazard ratio: 1.988, 95% confidence interval 1.380–2.862).

Conclusion: Proteinuria before ICU admission is a risk factor for development of AKI within seven days of ICU stay and also is a risk factor for 28-day mortality, even in patients with GFR > 60 mL/min.

Key words: Acute kidney injury, urine dipstick protein, proteinuria, 28-day mortality

1. Introduction

Acute kidney injury (AKI) is a frequently seen clinical disorder in intensive care units (ICU). Epidemiologic studies have shown that AKI is associated with length of ICU stay, prolonged mechanical ventilation, and mortality [1-3]. Besides increasing mortality, patients who survive an episode of AKI are at high risk of progression to chronic kidney disease (CKD) [4]. Regardless of etiology, AKI is a serious medical condition affecting more than 10 million people around the world and incidence of AKI is expected to double over the next decade [5]. The incidence in the ICU population is between 20% and 30% depending on the definition used [6]. CKD, septic shock, advanced age, nephrotoxic medications such as vancomycin and colistin, critical illness, circulatory shock, burns, and surgery are well known risk factors for development of AKI in ICU [7]. The incidence of ICU-acquired AKI is higher than

community-acquired AKI and the frequency of ICU-acquired AKI is also increasing over the years [8, 9].

AKI has been the focus of extensive basic and clinical research over the last decades. Any novel factor for accurately predicting AKI would be beneficial for preventing morbidity and mortality. Biomarkers such as neutrophil gelatinase associated lipocalin (NGAL) [10, 11] and cell cycle arrest markers tissue inhibitor of metalloproteinase-2 (TIMP-2) and insulin-like growth factor binding protein 7 (IGFBP-7) [12] have been studied for AKI stratification and prediction. However, all these biomarkers are expensive and their clinical values still appear to be limited [13].

Proteinuria is a well-known risk factor for CKD progression, cardiovascular disease and all-cause mortality in general population [14] but its effect on incidence of AKI and mortality in ICU patients is not well defined.

* Correspondence: hasanyeter@hotmail.com

Proteinuria can be easily and rapidly screened by a dipstick test. Studies were designed to demonstrate the relationship between proteinuria and AKI in recent years, but some of these focused only on the association between proteinuria and AKI but not mortality, or well-known risk factors such as CKD were not excluded in these studies. Shao et al. demonstrated that hypoalbuminemia in critically ill patients is independently associated with an increased risk of development of AKI and AKI progressing to CKD [15]. Li et al. showed that proteinuria was independently associated with all stages of postcardiotomy AKI in cardiac surgery patients [16]. Han et al. demonstrated that proteinuria is associated with AKI and long-term mortality in critically ill patients [17].

The aim of this study was to evaluate the relationship between mild to moderate proteinuria and incidence of AKI and 28-day mortality in patients with glomerular filtration rate (GFR) less than and more than 60 mL/min.

2. Material and methods

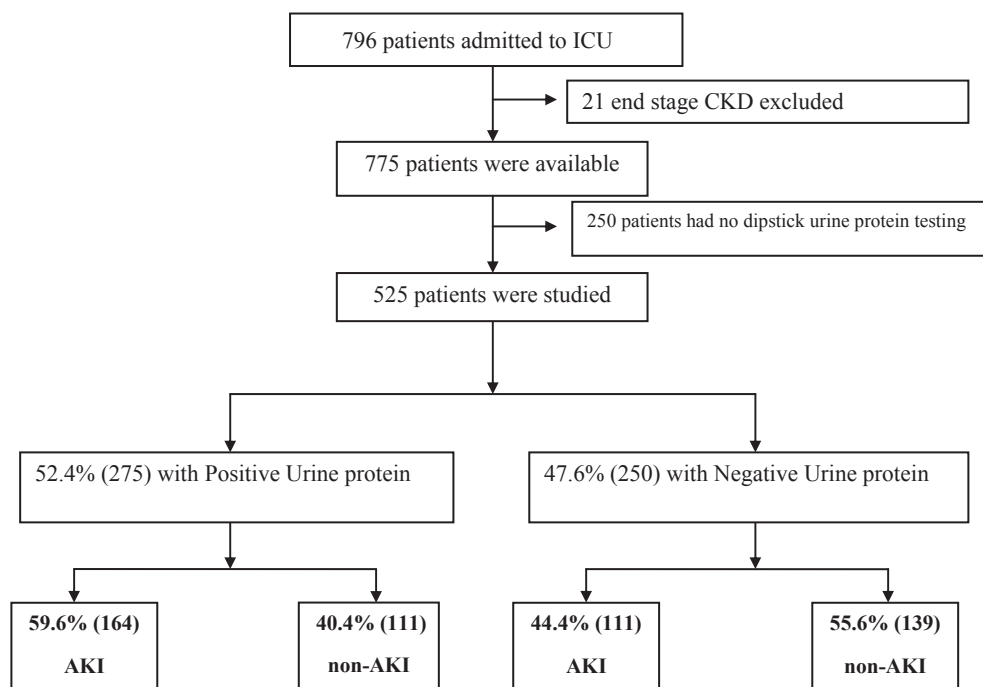
2.1. Study population

This observational retrospective study was conducted in the internal medicine ICU at Hacettepe University, Ankara, Turkey, from January 2008 to April 2014. Patients who were >18 years old and had urine dipstick protein measurement within the preceding three months of ICU

admission were included in the study. Exclusion criteria were severe (nephrotic range) proteinuria and end-stage kidney disease (admission GFR <15 mL/min estimated by MDRD formula) [18]. A total of 796 patients were screened. Twenty-one of 796 patients with end-stage kidney disease and 250 patients without dipstick urine protein analysis were excluded. Consequently, 525 patients were available for this analysis (Figure 1). The study was approved by the local ethics committee of Hacettepe University and was conducted in accordance with the Declaration of Helsinki.

2.2. Data collection

Hospital electronic medical records system was used for baseline information such as sex, age, comorbidities, contrast agent exposure, and calculation of Charlson comorbidity index. The 28-day mortality rates and duration of hospitalization in the ICU were determined for all patients. Data regarding creatinine, albumin, blood urea nitrogen (BUN), and urine dipstick protein within preceding three months were collected (72% of the samples were collected before hospital admission and 28% of the samples were collected at the first hospital admission) Patients' creatinine and albumin levels were recorded at the time of ICU admission, at 48 h and 7 days after ICU admission. Urine dipstick test was used to determine proteinuria level from negative to +3 using an automated urine chemistry analyzer iChem Velocity (Beckman



ICU, intensive care unit; CKD, chronic kidney disease; AKI; acute kidney injury

Figure 1. Study diagram.

Coulter, Brea, CA, USA). Plasma levels of albumin and creatinine were estimated by spectrophotometry and Jaffe technique using a Beckman Coulter spectrophotometer.

AKI was defined according to the 2012 Kidney Disease Improving Global Outcomes (KDIGO) Clinical Practice Guideline for Acute Kidney Injury [19] as follows: increase in serum creatinine by ≥ 0.3 mg/dL within 48 h or increase in serum creatinine to ≥ 1.5 times baseline as stage 1 AKI; increase in serum creatinine 2–2.9 times baseline as stage 2; increase in serum creatinine more than 3 times baseline or increase in serum creatinine by ≥ 4 mg/dL within 48 h or initiation of renal replacement treatment.

We used the abbreviated Modification of Diet in Renal Disease (MDRD) equation to estimate the GFR [18, 20]. Patients who had been admitted to ICU and had diagnosis of CKD were staged according to their MDRD estimated GFR as follows: at least 60 mL per minute per 1.73 m^2 , 45 to 59 mL per minute per 1.73 m^2 (stage 3a), 30 to 44 mL per minute per 1.73 m^2 (stage 3b), 15 to 29 mL per minute per 1.73 m^2 (stage 4), and less than 15 mL per minute per 1.73 m^2 (stage 5) [18].

2.3. Statistical analysis

Asymmetrically distributed variables in the text and tables were shown as median (minimum–maximum). For data that were not normally distributed, the Mann–Whitney U test was used if only two groups were compared; the Kruskal–Wallis one way analysis of variance was used if more than two groups were being compared. Logistic regression was used to identify variables that predict AKI. Cox regression analysis was used to identify AKI groups for mortality in AKI patients. Twenty-eight–day survival analysis was performed by Cox regression analysis. P-values less than 0.05 were considered to indicate statistical significance. Analyses were performed with SPSS 20 (SPSS, IBM, Armonk, NY) software for Windows.

3. Results

The study included 283 (53.9%) male and 242 (46.1%) female patients with a median age of 60 (18–95) years old. Of all the patients, 275 patients had positive urine protein and 250 patients had negative dipstick urine protein. Patients were divided into two groups as per their dipstick urine protein positivity. The characteristics of the study population were shown in Table 1. Demographic characteristics were similar in both groups. Urine protein positive group had more comorbidities including hypertension, diabetes, chronic liver disease, kidney diseases and malignancies according to Charlson comorbidity score compared to dipstick urine protein negative group ($P < 0.01$). There were no significant differences between two groups concerning the rates of contrast agent and nephrotoxic drug exposure ($P = 0.7$ and $P = 0.31$).

Patients with dipstick urine protein positivity on admission had higher proportion of AKI and hemodialysis compared to dipstick urine protein negative group [164 (59.6%) vs. 111 (44.4%) and 48 (17.5%) vs. 16 (6.4%), $P = 0.01$ and $P < 0.01$, respectively] (Table 1). Median albumin level at ICU admission was significantly lower in urine dipstick protein positive group than urine dipstick protein negative group (2.74 mg/dL (0.54–5.03) vs. 3.1 mg/dL (1.12–4.6) and $P < 0.01$). CKD rate was similar between two groups [42 (15.3%) vs. 28 (11.2%), $P = 0.17$). Median length of ICU and hospital stay were similar between two groups ($P = 0.1$ and $P = 0.43$). Twenty-eight–day mortality rate was significantly higher in the dipstick-urine-protein-positive group compared to the negative group [101 (36.7%) vs. 54 (21.6%), $P < 0.01$]. A separate analysis was carried out in patients with GFR > 60 mL/min (Table 2). Similar to the total study population, Charlson comorbidity score, hypertension, rates of AKI, hemodialysis, and 28-day mortality were statistically higher in the urine-protein-positive group ($P < 0.001$, $P = 0.01$, $P = 0.02$, $P = 0.02$ and $P < 0.001$, respectively) even in patients with GFR > 60 mL/min.

Logistic regression was used to analyze independent risk factors for AKI (Table 3). Nephrotoxic medication use (odds ratio (OR): 2.216, 95% confidence interval (CI): 1.475–3.329), dipstick urine protein positivity (OR: 1.559, 95% CI: 1.0106–2.313) and presence of chronic kidney disease (OR: 5.883, 95% CI: 3.012–11.490) were significantly associated with AKI. However, sex (OR: 0.954, 95% CI: 0.419–1.389), diabetes (OR: 1.061, 95% CI: 0.676–1.666), hypertension (OR: 0.838, 95% CI: 0.493–1.427), and congestive heart failure (OR: 1.135, 95% CI: 0.637–2.025) were not associated with AKI. Contrast agent use appeared as a protective factor for AKI development [OR: 0.625, 95% CI: 0.419–0.993]. Similar risk factors such as nephrotoxic medication use (OR: 2.214, 95% CI: 1.445–3.393) and dipstick urine protein positivity (OR: 1.493, 95% CI: 1.014–2.199) were also significantly associated with AKI in patients with GFR > 60 mL/min.

Urine dipstick protein positivity was a significant predictor of 28-day hospital mortality in univariate cox regression analysis. Compared with negative urine dipstick test, the adjusted hazard ratio (HR) of proteinuria was 1.694 (95% CI: 1.214–2.363). After exclusion of the patients with GFR < 60 mL/min, urine dipstick protein positivity was still a significant predictor of mortality as compared with negative urine dipstick protein (HR: 1.988 (95% CI: 1.380–2.862) (Figure 2).

4. Discussion

AKI is a common disorder in critically ill patients and has been associated with increased mortality and length of ICU stay [1, 21]. Various epidemiologic studies showed the incidence of AKI was about 3%–18% [22].

Table 1. Demographic and laboratory parameters.

	Total patient (n = 525)	Positive urine protein (n = 275)	Negative urine protein (n = 250)	P-value
Sex				
Male	283 (53.9%)	143(52%)	140 (56%)	0.35
Age years				
18–35	60(18-95) 93(17.7%)	63(18-95) 39(14.2%)	59(18-93) 54(21.6%)	0.06 0.06
36–65	211(40.2%)	112(40.7%)	99(39.6%)	0.06
>65	221(42.1%)	124(45.1%)	97(38.8)	0.03
Contrast agent				
Yes	216(41.1%)	111(40.4%)	105(42%)	0.7
Nephrotoxic agent	335(63.8%)	181(65.8%)	154(61.6%)	0.31
Charlson comorbidity score(<i>median</i>)	3(0-10)	3(0-10)	2(0-9)	<0.01
Diabetes	129(24.6%)	76(27.6%)	53(21.2%)	0.08
Hypertension	142(27%)	85(30.9%)	57(22.8%)	0.04
CHF (NYHA 3-4)	104(19.8%)	60(21.8%)	44(17.6%)	0.22
Malignancy	125 (23.8%)	59 (21.4%)	66 (26.4%)	0.12
Surgery				
Cardiac	3(0.6%)	2(0.07%)	1(0.4%)	
Noncardiac	45(8.6%)	30(10.9%)	15(6%)	
AKI				
Total	275(52.4%)	164(59.6%)	111(44.4%)	0.01
ICU-acquired	102(19.4%)	60(21.8%)	42(16.8%)	0.14
Before ICU	173(33%)	104(37.8%)	69(27.6%)	0.01
Hemodialysis	64(12.2%)	48(17.5%)	16(6.4%)	<0.01
Chronic kidney				
No	455(86.7)	233(84.7%)	222(88.8%)	
Yes	70(13.3%)	42(15.3%)	28(11.2%)	0.17
G3a	26(5%)	8(2.9%)	18(7.2%)	0.02
G3b	25(4.8%)	18(6.5%)	7(2.8%)	0.04
G4	19(3.7%)	16(5.9%)	3(1.2%)	<0.01
ICU admission				
Sepsis	140(26.7%)	87(31.6%)	53(21.2%)	
Respiratory failure	268(51%)	134(48.7%)	134(53.6%)	<0.01
Hypervolemia	10(1.9%)	1(0.4%)	9(3.6%)	0.13
Intoxication	19(3.6%)	6(2.2%)	13(5.2%)	<0.01
Others	88(16.8%)	47(17.1%)	41(16.4%)	
Laboratory				
Cre-0 (mg/dL)	0.9(0.1-5.9)	1.06(0.2-5.9)	0.9(0.1-4.2)	0.03
Cr-48 (mg/dL)	0.9(0.2-11.2)	1.1(0.2-6.97)	0.8(0.2-11.2)	0.02
Alb-0 (g/dL)	2.9(0.5-6.6)	2.74(0.54-5.03)	3.1(1.12-4.6)	<0.01
Alb-48 (g/dL)	2.8(1.18-4.6)	2.57(1.18-4.32)	3.02(1.69-4.6)	<0.01
Hemoglobin (g/dL)	11.7 (9.9-15.2)	11(9.9-12.9)	11.8(10.5-15.2)	0.1
Length of hosp.	17(0-392)	19(0-186)	16(0-392)	0.43
Length of ICU	6(0-186)	7(0-186)	6(0-54)	0.1
28-day mortality	155(29.5%)	101(36.7%)	54(21.6%)	<0.01

G3a: GFR 60–45 mL/min, **G3b:** GFR 45–30 mL/min, **G4:** GFR 30–15 mL/min, **Cre:** Creatinine, **Alb:** Albumin, **ICU:** Intensive care unit, **CHF:** Congestive heart failure, **AKI:** Acute kidney injury

Table 2. Subgroup analysis of GFR > 60 patients.

	Total patient (n = 455)	Positive urine protein (n = 233)	Negative urine protein (n = 222)	P- value
Sex				
Male	248(54.5%)	125(53.6%)	123(55.4%)	0.77
Contrast agent	193(42.4%)	96(41.2%)	97(43.7%)	0.63
Toxic agent	285(62.6%)	150(64.3%)	135(60.8%)	0.44
AKI	217(47.6%)	124(53.2%)	93(41.8%)	0.02
Hemodialysis	44(9.6%)	30(12.8%)	14(6.3%)	0.02
28-day mortality	133(29.3%)	89(38.2%)	44(19.8%)	<0.001

Table 3. Logistic regression for independent risk factors for AKI.

Variable	Total patients (n: 525)		GFR > 60 mL/min patients (n: 455)	
	Odds ratio (95%CI)	P-value	Odds ratio (95%CI)	P-value
Male	0.954(0.655-1.389)	0.8	1.165(0.789-1.720)	0.44
Contrast agent	0.625(0.419-0.933)	0.02	0.538(0.354-0.818)	0.004
Nephrotoxic medication	2.216(1.475-3.329)	<0.01	2.214(1.445-3.393)	<0.01
Urine protein	1.559(1.106-2.313)	0.01	1.493(1.014-2.199)	0.04
Chronic kidney (GFR < 60 mL/min)	5.883(3.012-11.490)	<0.01		
Diabetes	1.061(0.676-1.666)	0.73	0.994(0.617-1.601)	0.98
Hypertension	0.838(0.493-1.427)	0.5	1.330(0.838-2.112)	0.22
Surgery	0.903(0.504-1.616)	0.73	0.936(0.491-1.784)	0.84
Congestive heart failure	1.135(0.637-2.025)	0.66	1.524(0.885-2.625)	0.12

Most of patients in ICUs are exposed to more than one risk factor such as contrast agent, CKD, and nephrotoxic medications for AKI. This study demonstrated that dipstick urine protein positivity is related to increased risk of AKI and 28-day mortality in ICU patients. Results also support previous epidemiologic studies that nephrotoxic medication and CKD were independent risk factors for AKI. On the contrary, contrast agent exposure seems to have not a detrimental, but a protective effect against AKI development. This might be explained either by introducing preventive precautions (such as IV hydration or N-acetylcysteine administration) before contrast exposure or the observational and retrospective nature of this trial because preventive precautions are taken to reduce the development of contrast nephropathy in accordance with international standards for all patients in ICU where the data were collected. Moreover, some recent studies have shown no increased risk of AKI due to contrast exposure in low-risk patients [23].

Regardless of etiology, AKI is a serious medical condition affecting more than 10 million people around

the world [5] and associated with length of ICU stay, prolonged mechanical ventilation and mortality [1-3]. Any novel factor for accurately predicting AKI would be advantageous. Over the past decade many studies have focused on the independent risk factors [24-26] and early predictors for AKI [27, 28]. Novel potential biomarkers such as cystatin C [29], interleukin-18 (IL-18) [27], and NGAL, [30] have failed to demonstrate clear clinical utility [31]. These biomarkers are not only difficult to measure, but also very expensive for routine clinical use. In this study, simple assessment of dipstick protein was found to be a predictor of developing AKI. In a previous study, Han et al. demonstrated that proteinuria is associated with AKI and long-term mortality in critically ill patients [17]. As CKD has been shown to be significant risk factor for developing AKI in previous studies [2, 32, 33], Han et al. did not exclude patients with GFR < 60 mL/min. Unlike Han et al.'s, in this study, AKI risk factors in patients with GFR > 60mL/min were separately analyzed and it was found that urine protein positivity was still a significant risk factor for AKI.

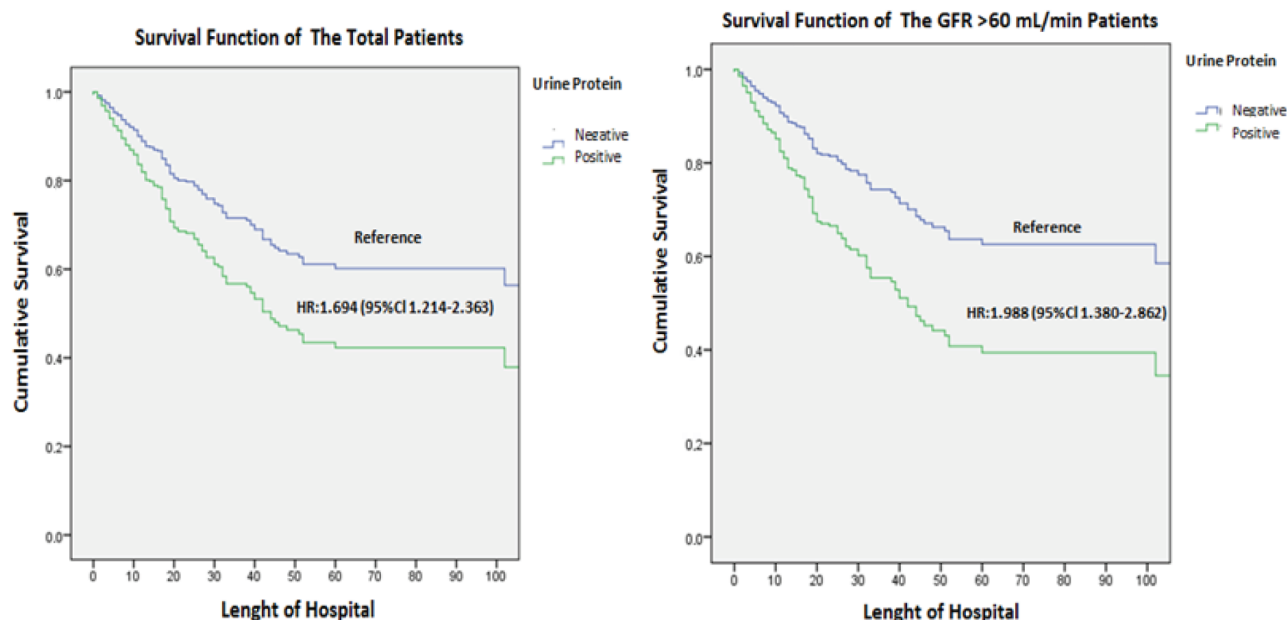


Figure 2. Cox regression analysis: 28-day hospital mortality according to the urine protein positivity for the whole group ($P = 0.002$) and with $GFR > 60$ mL/min ($P < 0.001$).

This study showed that dipstick urine protein positivity was associated with not only developing AKI, but also increased 28-day mortality in critically ill patients. There is limited data about association between proteinuria and mortality in the literature. Hara et al. reported that proteinuria was a simple sign of coexisting systemic inflammation and it was associated with mortality in patients with non-Hodgkin lymphomas [34]. Konta et al. showed that proteinuria/albuminuria were independently associated with mortality in the Japanese general population [35]. Ota et al. and Tonelli et al. also investigated all-cause mortality in acute myocardial infarction (AMI) patients [36, 37]. Both studies showed that dipstick proteinuria was an independent predictor of all-cause mortality with or without impaired kidney function. The mechanisms responsible for the association between proteinuria in critically ill patients and mortality remain unclear. However, inflammation and endothelial dysfunction are proposed mechanisms for this relationship [38]. Studies using the inflammatory cytokines interleukin-6 (IL-6) C-reactive protein, and tumor-necrosing-factor alfa (TNF- α) have shown that regardless of the presence of diabetes these markers are associated with the occurrence of microalbuminuria and mortality [39, 40].

References

1. Mehta RL, Kellum JA, Shah SV, Molitoris BA, Ronco C et al. Acute Kidney Injury Network: report of an initiative to improve outcomes in acute kidney injury. *Critical Care* 2007; 11(2): 1.
2. Waikar SS, Liu KD, Chertow GM. Diagnosis, epidemiology and outcomes of acute kidney injury. *Clinical Journal of the American Society of Nephrology* 2008; 3(3): 844-861.

3. Kaddourah A, Basu RK, Bagshaw SM, Goldstein SL. Epidemiology of acute kidney injury in critically ill children and young adults. *New England Journal of Medicine* 2017; 376(1): 11-20.
4. Amdur RL, Chawla LS, Amodeo S, Kimmel PL, Palant CE. Outcomes following diagnosis of acute renal failure in US veterans: focus on acute tubular necrosis. *Kidney International* 2009; 76(10): 1089-1097.
5. Bellomo R, Kellum JA, Ronco C. Acute kidney injury. *The Lancet* 2012; 380(9843): 756-766.
6. Rizo-Topete L, Ronco C. Critical Care Nephrology: A multidisciplinary approach. *Blood Purification* 2016; 43(1-3): 53-56.
7. Cole L, Bellomo R, Silvester W. A prospective, multicenter study of the epidemiology, management, and outcome of severe acute renal failure in a "closed" ICU system. *American Journal of Respiratory and Critical Care Medicine* 2000; 162(1): 191-196.
8. Joannidis M, Metnitz B, Bauer P, Schusterschitz N, Moreno R et al. Acute kidney injury in critically ill patients classified by AKIN versus RIFLE using the SAPS 3 database. *Intensive Care Medicine* 2009; 35(10): 1692-1702.
9. Metnitz PG, Krenn CG, Steltzer H, Lang T, Ploder J et al. Effect of acute renal failure requiring renal replacement therapy on outcome in critically ill patients. *Critical Care Medicine* 2002; 30(9): 2051-2058.
10. Shemin D, Dworkin LD. Neutrophil gelatinase-associated lipocalin (NGAL) as a biomarker for early acute kidney injury. *Critical Care Clinics* 2011; 27(2): 379-389.
11. de Geus HR, Bakker J, Lesaffre EM, Le Noble JL. Neutrophil gelatinase-associated lipocalin at ICU admission predicts for acute kidney injury in adult patients. *American Journal of Respiratory and Critical Care Medicine* 2011; 183(7): 907-914.
12. Kashani K, Al-Khafaji A, Ardiles T, Artigas A, Bagshaw SM et al. Discovery and validation of cell cycle arrest biomarkers in human acute kidney injury. *Critical Care* 2013; 17(1): R25.
13. Prowle JR. Measurement of AKI biomarkers in the ICU: still striving for appropriate clinical indications. *Intensive Care Medicine* 2015; 3: 541-543.
14. Kannel WB, Stampfer MJ, Castelli WP, Verter J. The prognostic significance of proteinuria: the Framingham study. *American Heart Journal* 1984; 108(5): 1347-1352.
15. Shao M, Wang S, Parameswaran PK. Hypoalbuminemia: a risk factor for acute kidney injury development and progression to chronic kidney disease in critically ill patients. *International Urology and Nephrology* 2017; 49(2): 295-302.
16. Li S-Y, Chuang C-L, Yang W-C, Lin S-J. Proteinuria predicts postcardiotomy acute kidney injury in patients with preserved glomerular filtration rate. *The Journal of Thoracic and Cardiovascular Surgery* 2015; 149(3): 894-899.
17. Han SS, Ahn SY, Ryu J, Baek SH, Chin HJ et al. Proteinuria and hematuria are associated with acute kidney injury and mortality in critically ill patients: a retrospective observational study. *BMC Nephrology* 2014; 15(1): 93.
18. Levey AS, Coresh J, Bolton K, Culeton B, Harvey KS et al. National Kidney Foundation (NKF) clinical practice guidelines for chronic kidney disease: evaluation, classification, and stratification. *American Journal of Kidney Diseases* 2002; 39(2 Suppl 1): 1.
19. Khwaja A. KDIGO clinical practice guidelines for acute kidney injury. *Nephron Clinical Practice* 2012; 120(4): 179-184.
20. Levey AS, Bosch JP, Lewis JB, Greene T, Rogers N et al. A more accurate method to estimate glomerular filtration rate from serum creatinine: a new prediction equation. *Annals of Internal Medicine* 1999; 130(6): 461-470.
21. Chen Y-C, Tsai F-C, Fang J-T, Yang C-W. Acute kidney injury in adults receiving extracorporeal membrane oxygenation. *Journal of The Formosan Medical Association* 2014; 113(11): 778-785.
22. Li PKT, Burdmann EA, Mehta RL, Committee WKDS. Acute kidney injury: global health alert. *Kidney International* 2013; 83(3): 372-376.
23. Wilhelm-Leen E, Montez-Rath ME, Chertow G. Estimating the risk of radiocontrast-associated nephropathy. *Journal of the American Society of Nephrology* 2017; 28(2): 653-659.
24. Yuan Y, Qiu H, Hu X-Y, Luo T, Gao X-J et al. Risk Factors of Contrast-induced acute kidney injury in patients undergoing emergency percutaneous coronary intervention. *Chinese Medical Journal* 2017; 130(1): 45.
25. Cruz DN, Ferrer-Nadal A, Piccinni P, Goldstein SL, Chawla LS et al. Utilization of small changes in serum creatinine with clinical risk factors to assess the risk of AKI in critically ill adults. *Clinical Journal of The American Society of Nephrology* 2014; 9(4): 663-672.
26. Bonazza S, Bresee LC, Kraft T, Ross BC, Dersch-Mills D. Frequency of and Risk Factors for Acute Kidney Injury Associated With Vancomycin Use in the Pediatric Intensive Care Unit. *The Journal of Pediatric Pharmacology and Therapeutics* 2016; 21(6): 486-493.
27. Parikh C, Mishra J, Thiessen-Philbrook H, Dursun B, Ma Q et al. Urinary IL-18 is an early predictive biomarker of acute kidney injury after cardiac surgery. *Kidney International* 2006; 70(1): 199-203.
28. Nguyen MT, Devarajan P. Biomarkers for the early detection of acute kidney injury. *Pediatric Nephrology* 2008; 23(12): 2151.
29. Krawczeski CD, Vandevoorde RG, Kathman T, Bennett MR, Woo JG et al. Serum cystatin C is an early predictive biomarker of acute kidney injury after pediatric cardiopulmonary bypass. *Clinical Journal of The American Society of Nephrology* 2010; 5(9): 1552-1557.
30. Hirsch R, Dent C, Pflieger H, Allen J, Beekman RH et al. NGAL is an early predictive biomarker of contrast-induced nephropathy in children. *Pediatric Nephrology* 2007; 22(12): 2089.
31. McCullough PA, Shaw AD, Haase M, Bouchard J, Waikar SS et al. Diagnosis of acute kidney injury using functional and injury biomarkers: workgroup statements from the tenth Acute Dialysis Quality Initiative Consensus Conference. *Contributions to Nephrology* 2013; 182: 13-29.

32. Singh P, Rifkin DE, Blantz RC. Chronic kidney disease: an inherent risk factor for acute kidney injury? *Clinical Journal of The American Society of Nephrology* 2010; 5(9): 1690-1695.
33. Mehran R, Aymong ED, Nikolsky E, Lasic Z, Iakovou I et al. A simple risk score for prediction of contrast-induced nephropathy after percutaneous coronary intervention: development and initial validation. *Journal of The American College of Cardiology* 2004; 44(7): 1393-1399.
34. Hara M, Ando M, Maeda Y, Tsuchiya K, Nitta K. Proteinuria is a simple sign of systemic inflammation that leads to a poor prognosis in individuals affected with non-Hodgkin lymphoma. *Clinical Nephrology* 2014; 82(1): 51-57.
35. Konta T. Clinical significance of proteinuria and renal function: findings from a population-based cohort, the Takahata study. *Rinsho byori. The Japanese Journal of Clinical Pathology* 2013; 61(7): 629-634.
36. Ota H, Takeuchi T, Sato N, Hasebe N. Dipstick proteinuria as a surrogate marker of long-term mortality after acute myocardial infarction. *Journal of Cardiology* 2013; 62(5): 277-282.
37. Tonelli M, Jose P, Curhan G, Sacks F, Braunwald E et al. Proteinuria, impaired kidney function, and adverse outcomes in people with coronary disease: analysis of a previously conducted randomised trial. *BMJ* 2006; 332(7555): 1426.
38. Stehouwer CDS, Mulders YM. Microalbuminuria and risk for cardiovascular disease: analysis of potential mechanisms. *Journal of The American Society of Nephrology* 2006; 17(8): 2106-2111.
39. Jager A, van Hinsbergh VW, Kostense PJ, Emeis JJ, Nijpels G et al. C-reactive protein and soluble vascular cell adhesion molecule-1 are associated with elevated urinary albumin excretion but do not explain its link with cardiovascular risk. *Arteriosclerosis, Thrombosis and Vascular Biology* 2002; 22(4): 593-598.
40. Stehouwer CD, Gall M-A, Twisk JW, Knudsen E, Emeis JJ et al. Increased urinary albumin excretion, endothelial dysfunction, and chronic low-grade inflammation in type 2 diabetes. *Diabetes* 2002; 51(4): 1157-1165.