

Girişimsel Nöroradyoloji (Interventional Neuroradiology)

PROF DR ANIL ARAT
ÖĞR GÖR DR SİNAN BALCI
RADYOLOJİ ABD

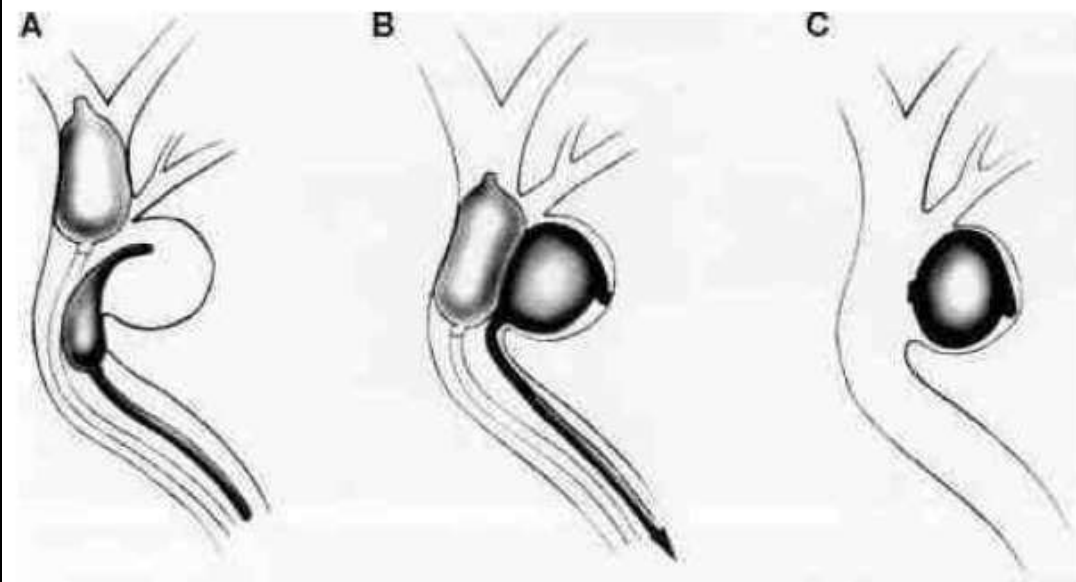
Interventional neuroradiology is using **percutaneous and endovascular** procedures to treat patients with diseases of the brain, sensory organs, head & neck, spinal cord, vertebral column and adjacent structures and the peripheral nervous system in adults and children. (UEMS)

Table 1. Classification of endovascular procedure

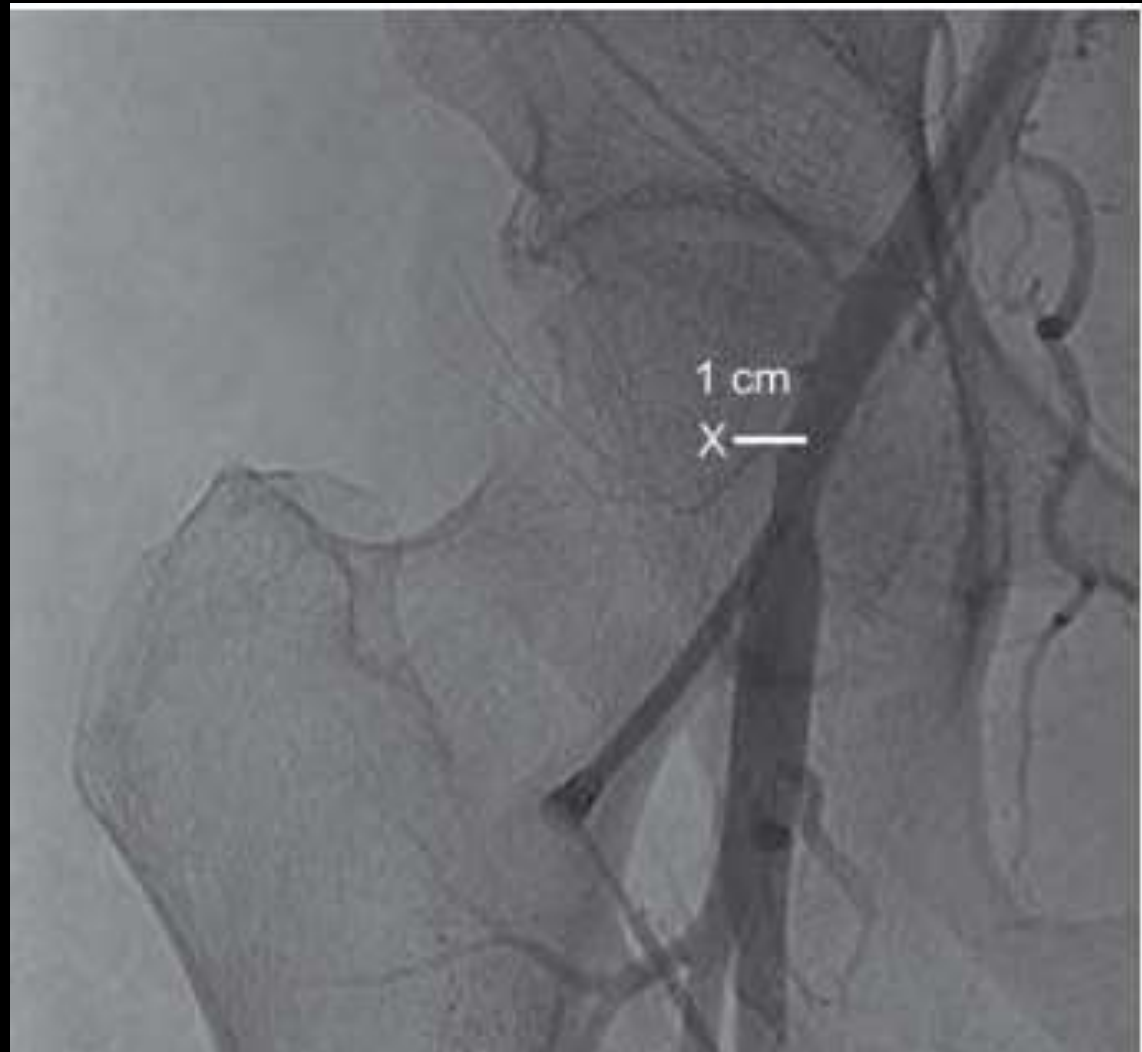
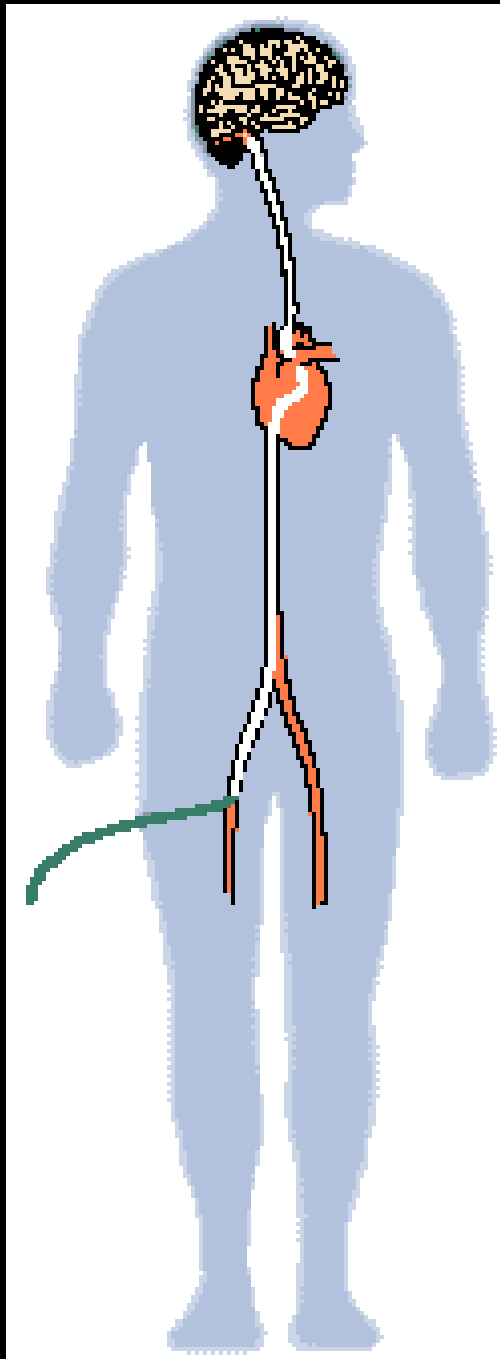
Method	Procedure	Materials*
Occlusion	Aneurysm	Detachable coils
	AVMs	nBCA
	AVFs	Coils, balloon
	Tumors	PVA particles
Opening	Atherosclerotic stenosis	Stent
	Acute thrombosis	tPA, urokinase, platelet GP IIb/IIIa inhibitors
	Vasospasm	Balloon
Delivery	Vasospasm	Papaverin
	Chemotherapy ^{20,24,50)}	ACNU, etc.
	Stem cell implatation ²⁾	



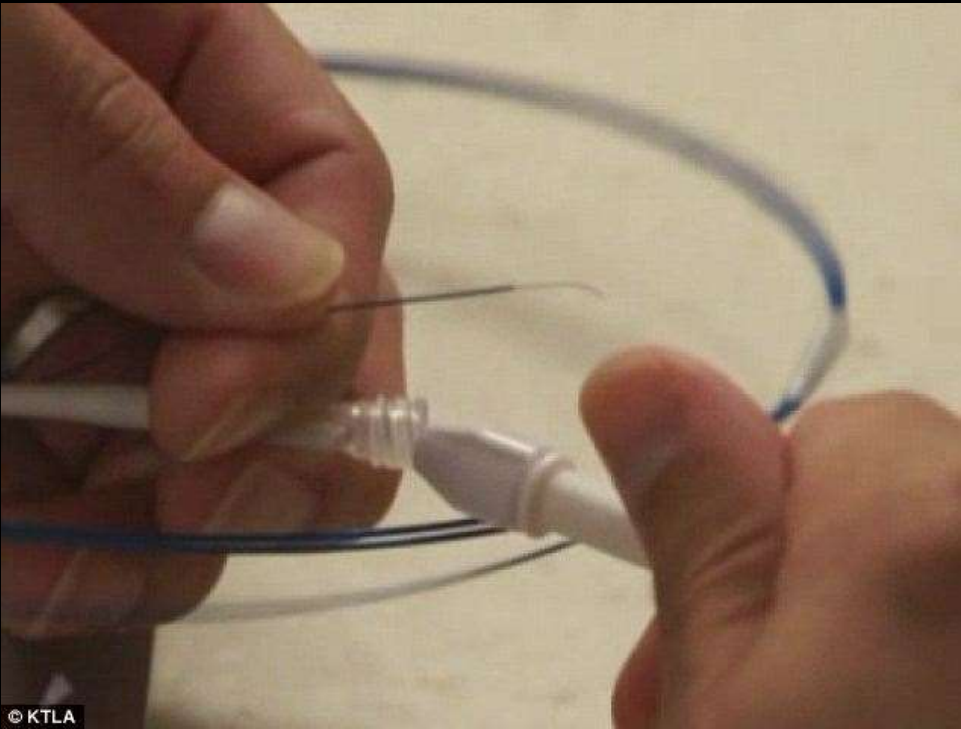
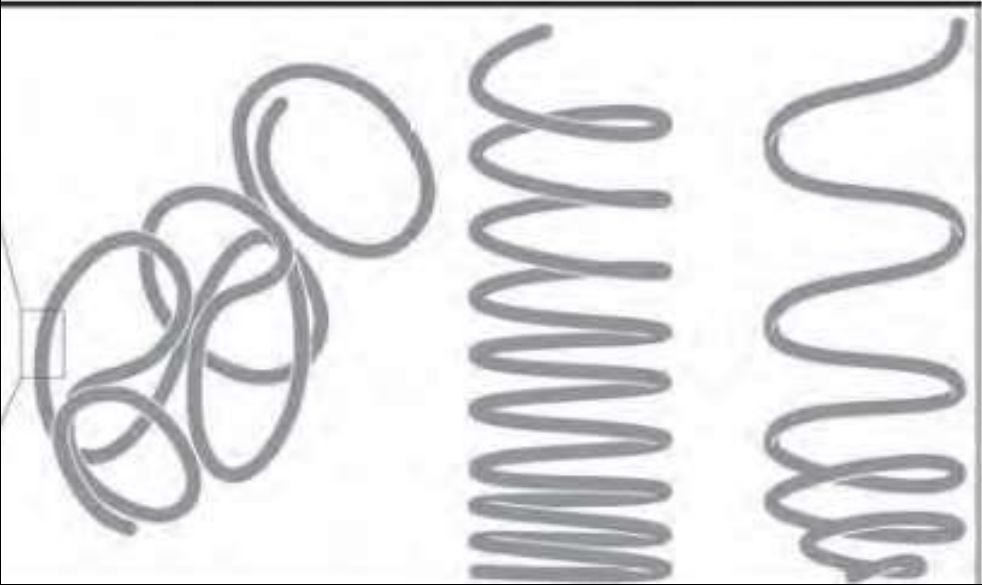
FIGURE 8. Serbinenko with friend and pupil Victor Shcheglov (*left*) in 1979.







OCCLUSION



2. the catheter is carefully guided into the aneurysm.

3. soft platinum coils are deposited through the microcatheter into the aneurysm.



4. the coils conform to the often irregular shape of an aneurysm. An avg. of 5-6 coils are required for each aneurysm.



5. coils will prevent blood flow into the aneurysm.



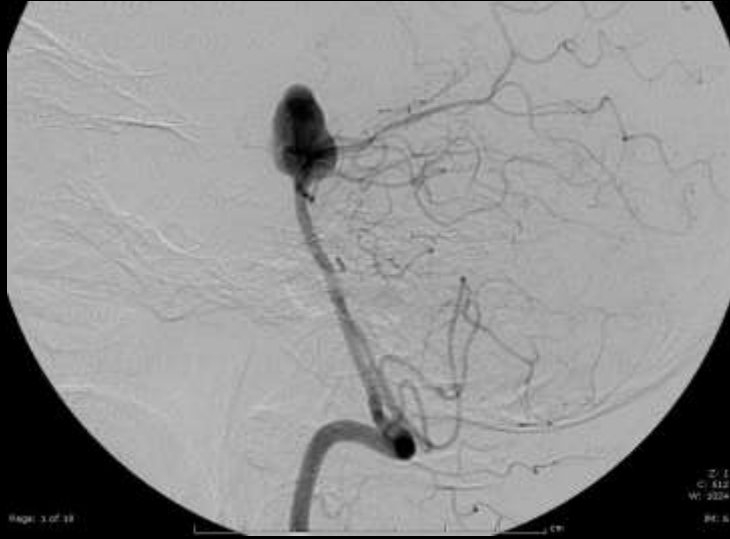




Page: 1 of 10

Z: 1
C: 112
W: 3324

PH: 5



Page: 3 of 10

Z: 1
C: 112
W: 3324

PH: 5



Page: 5 of 10

Z: 1
C: 112
W: 3324

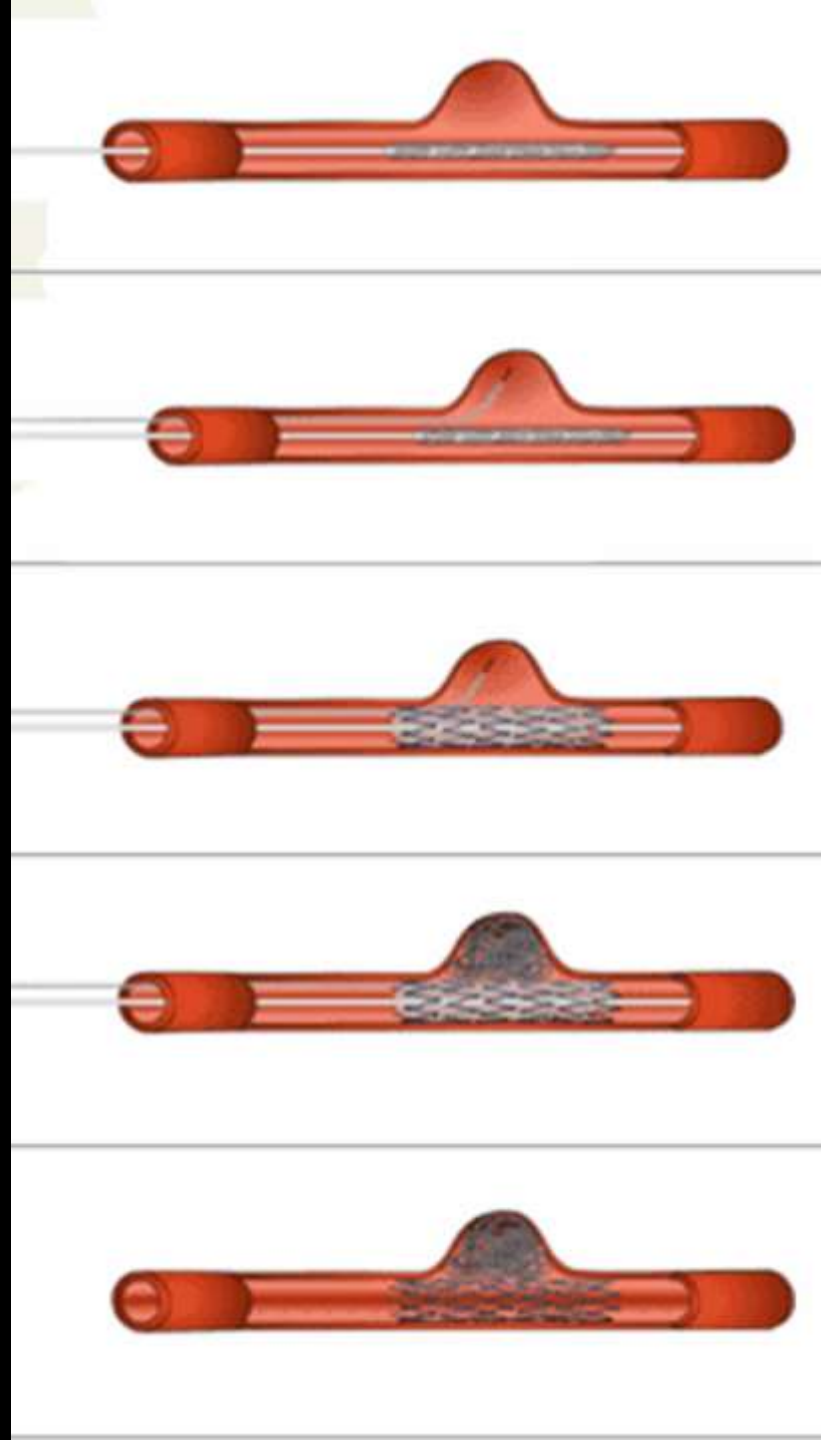
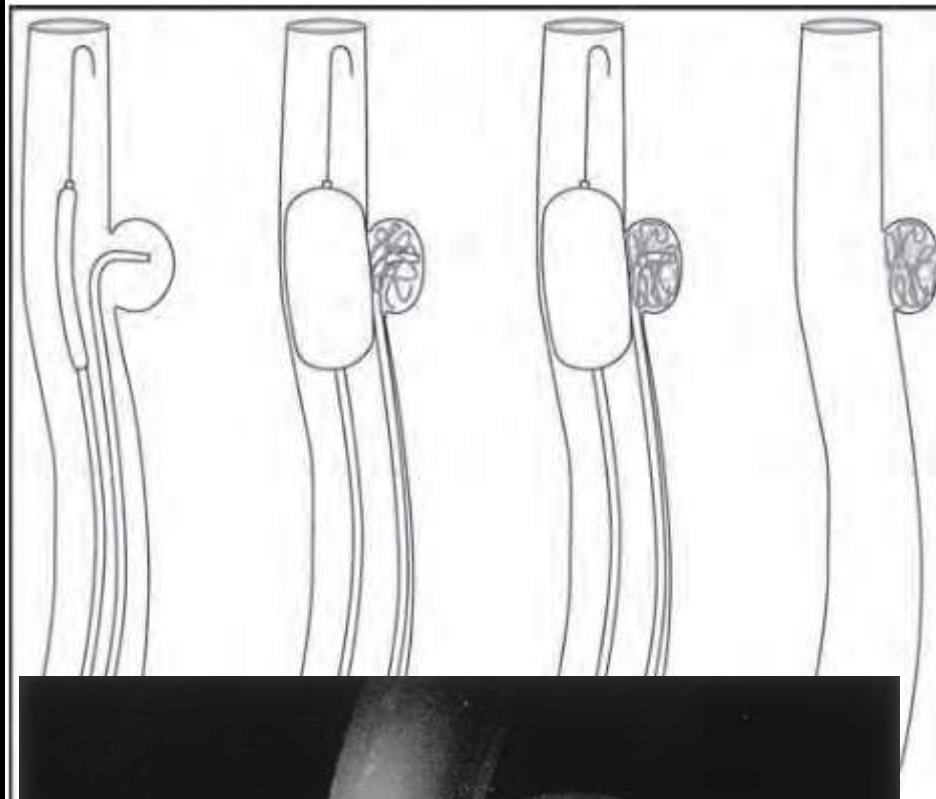
PH: 5

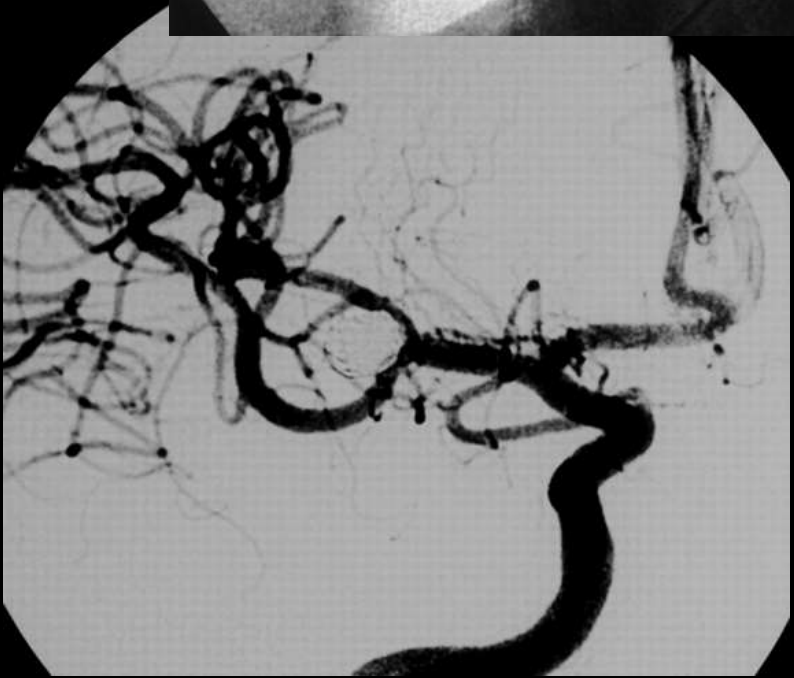
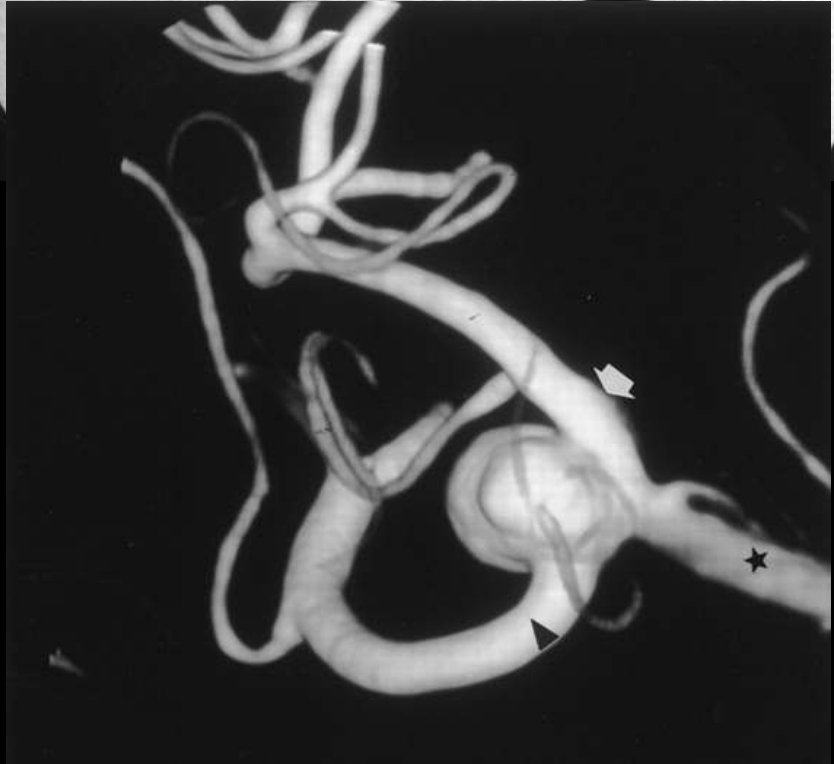
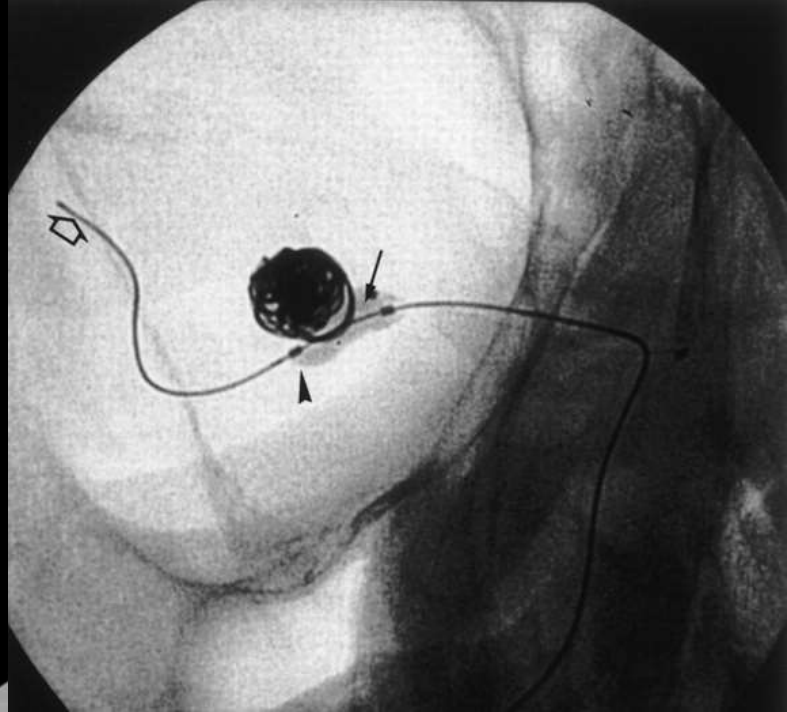
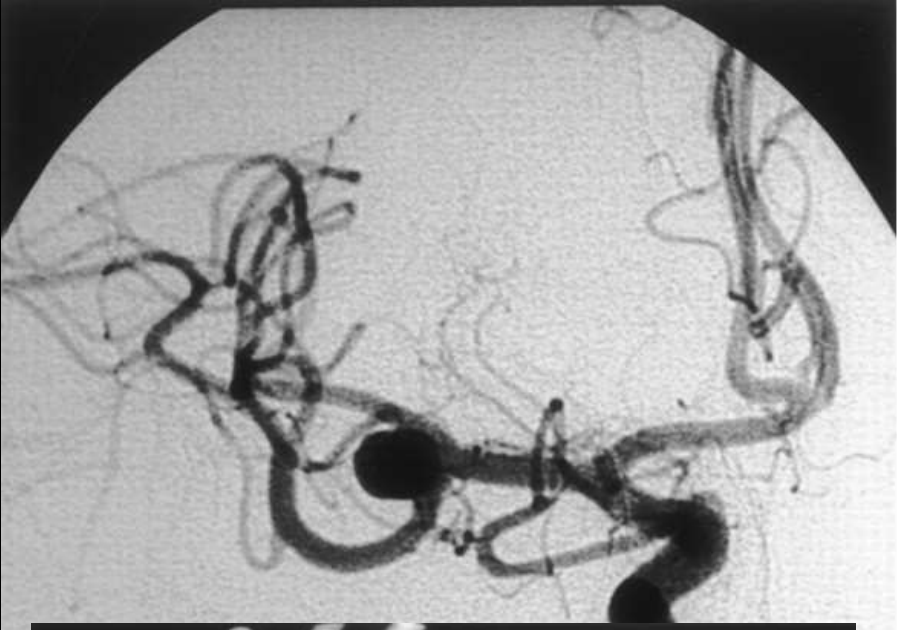


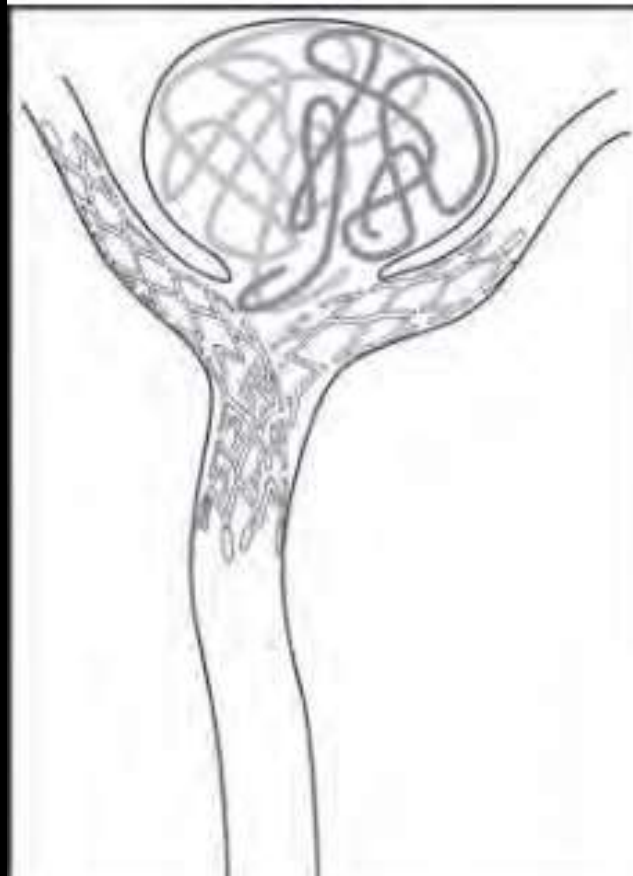
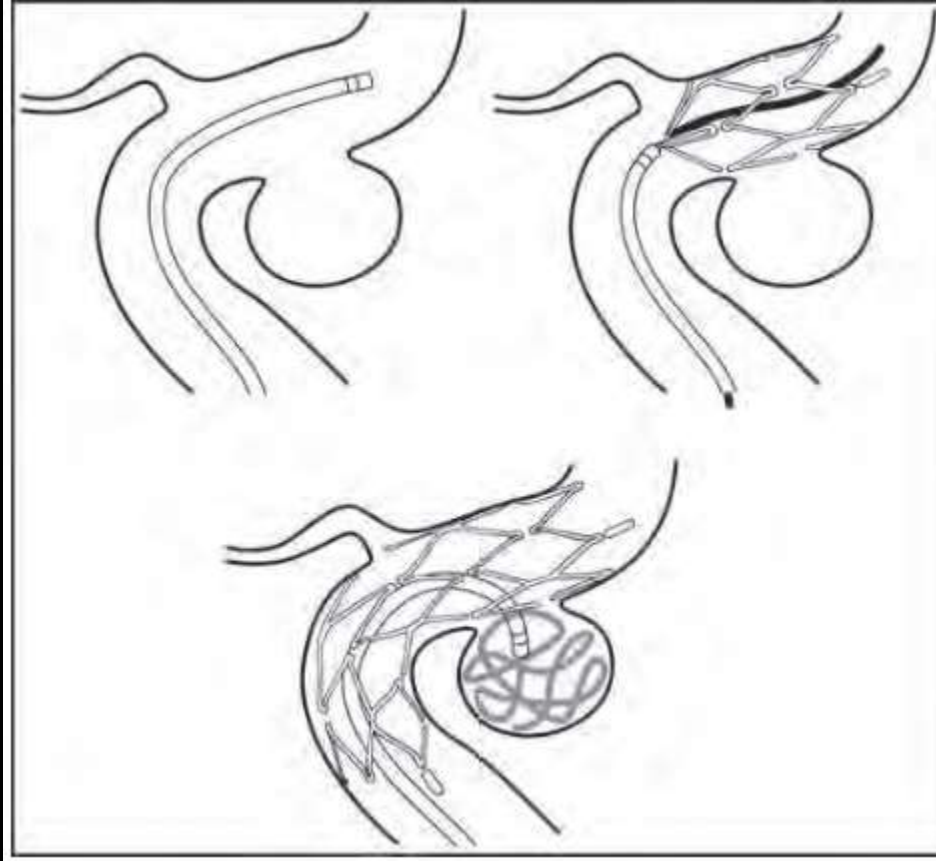
Page: 11 of 10

Z: 1
C: 112
W: 3324

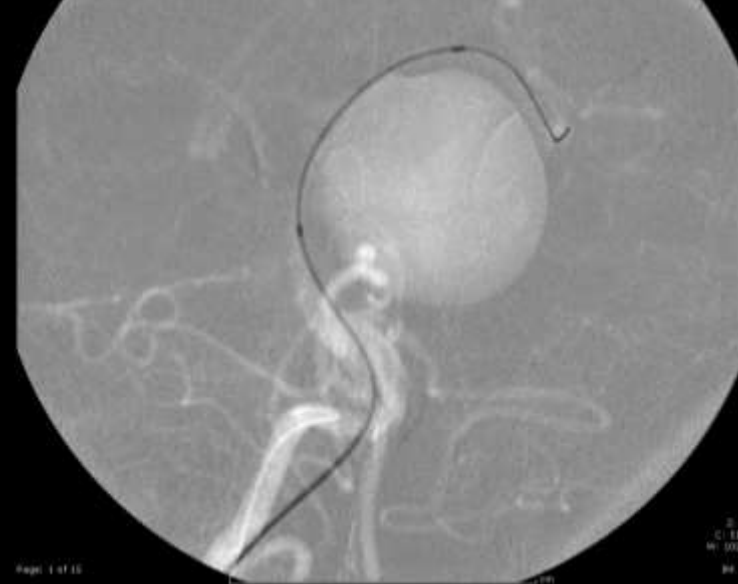
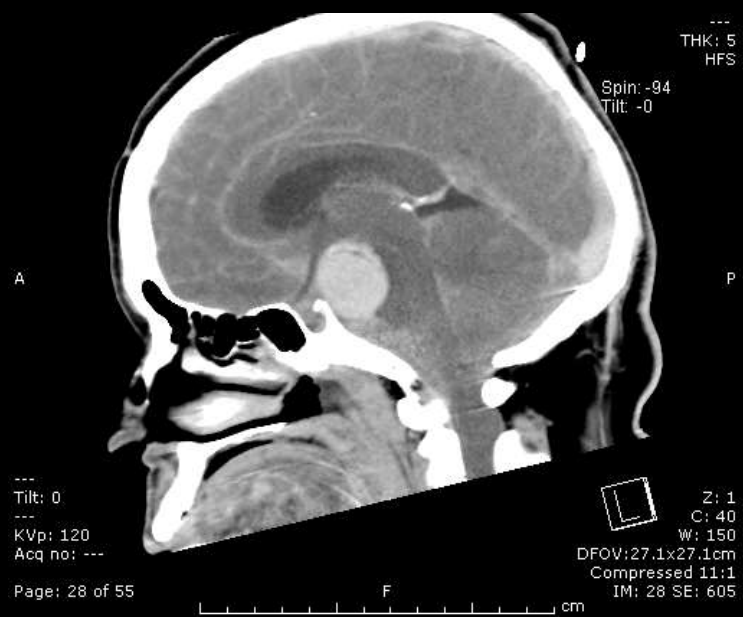
PH: 5

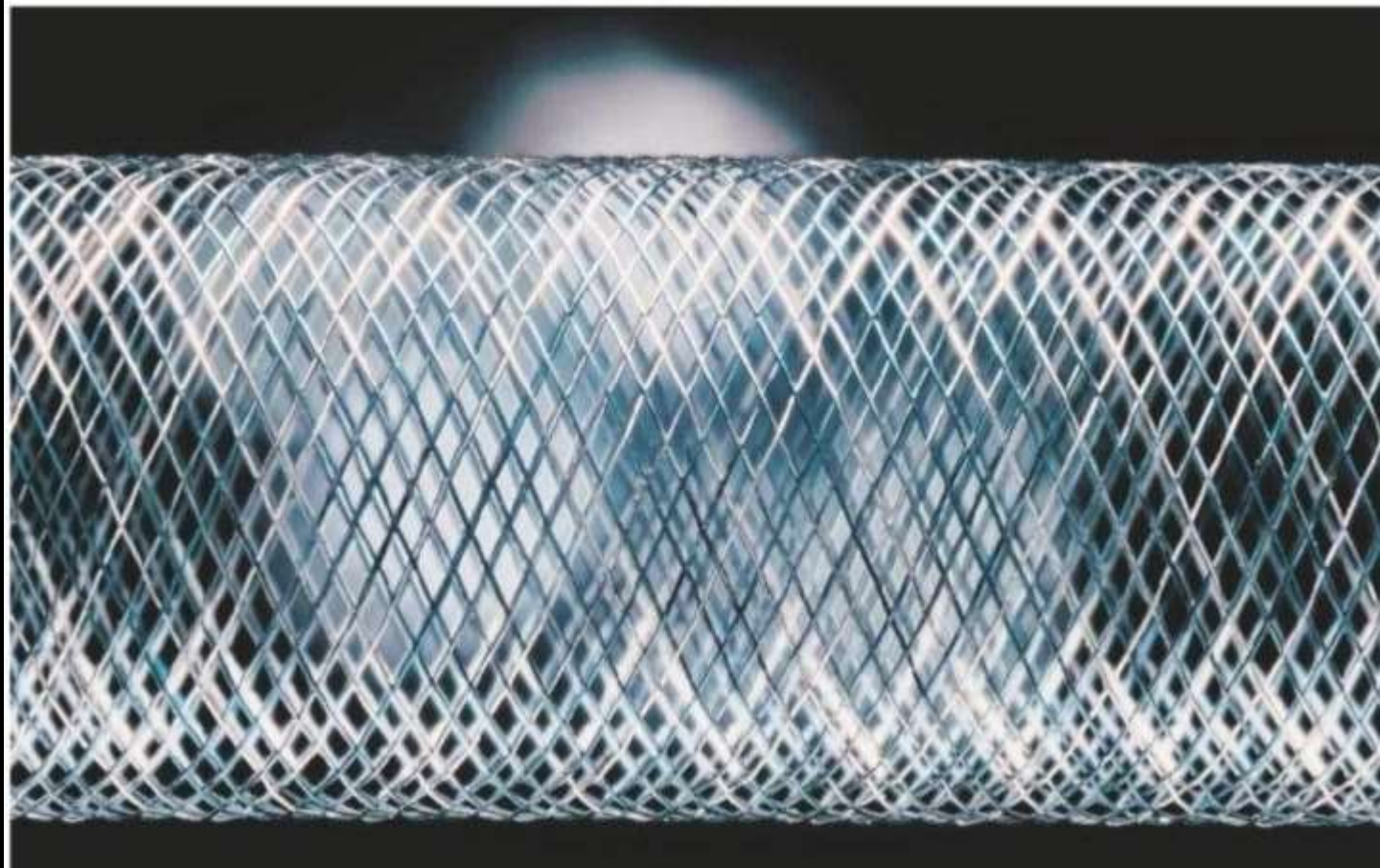


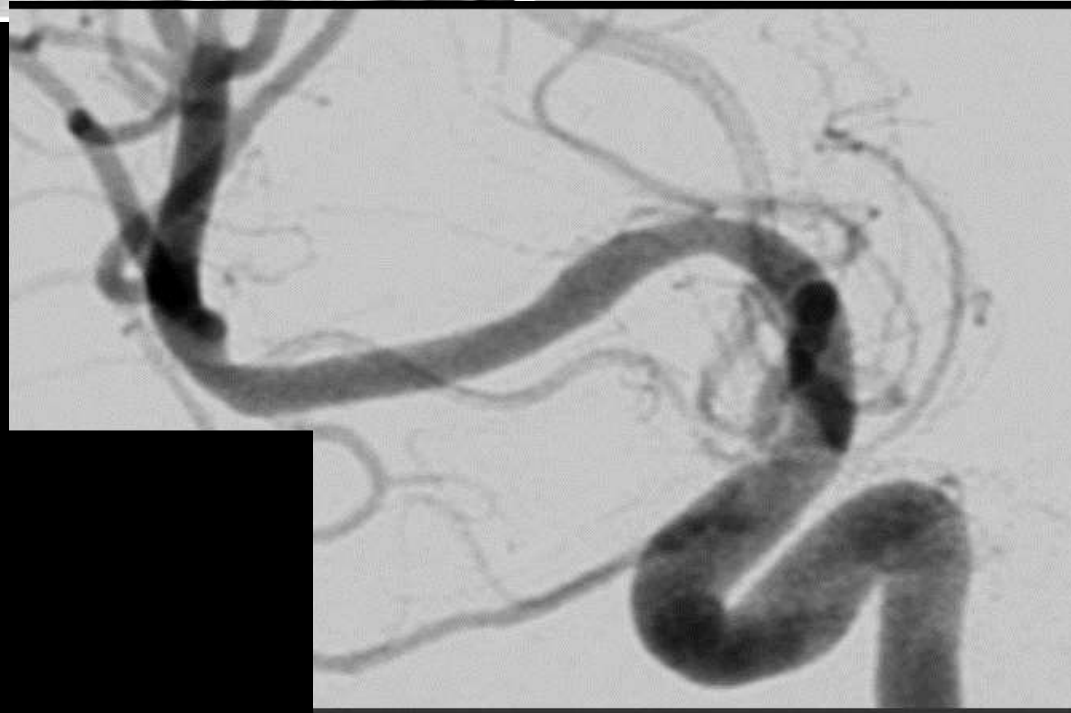
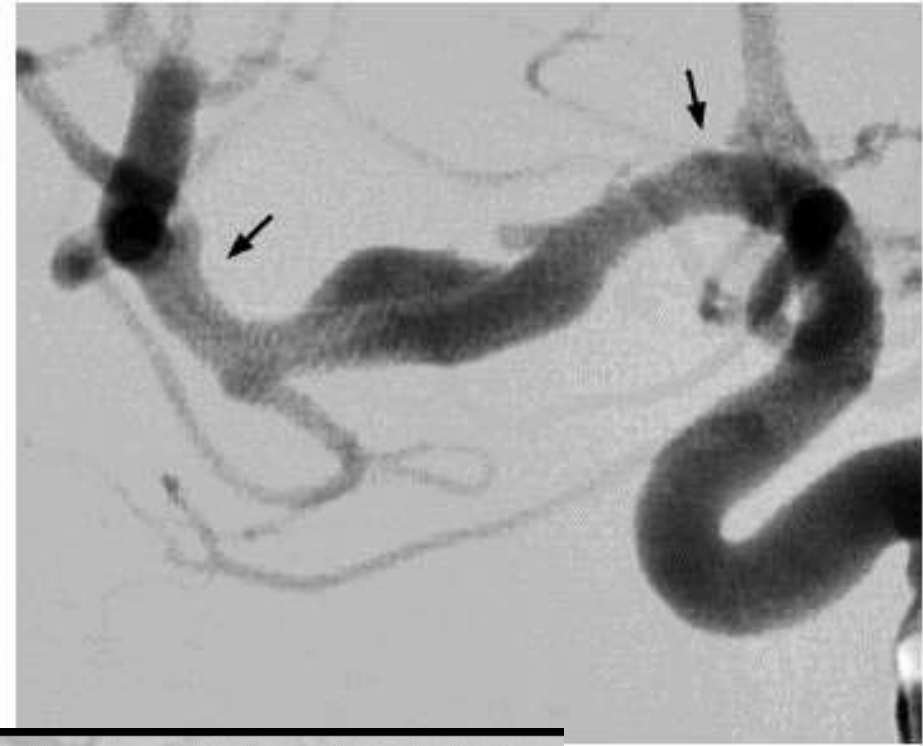






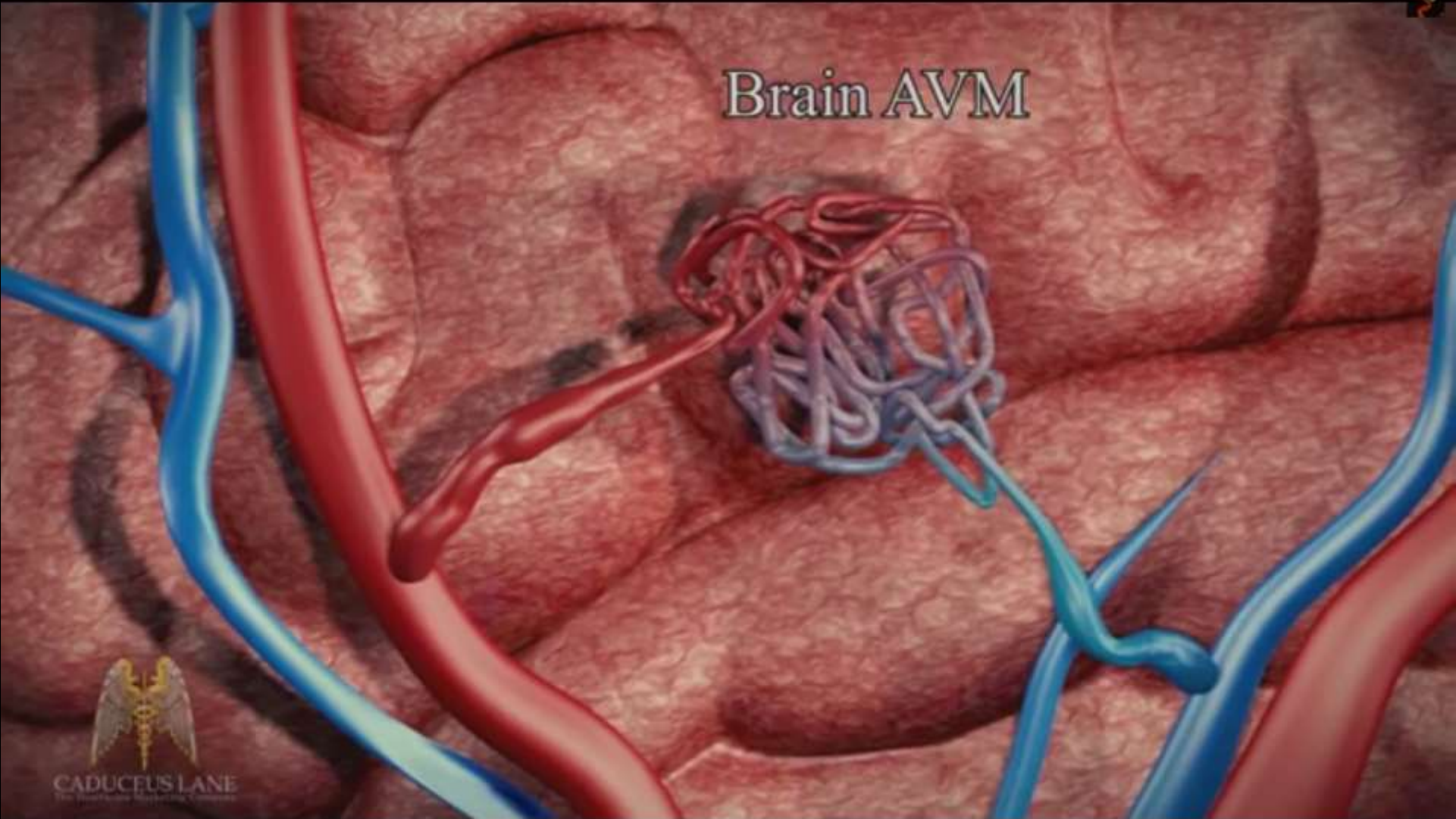


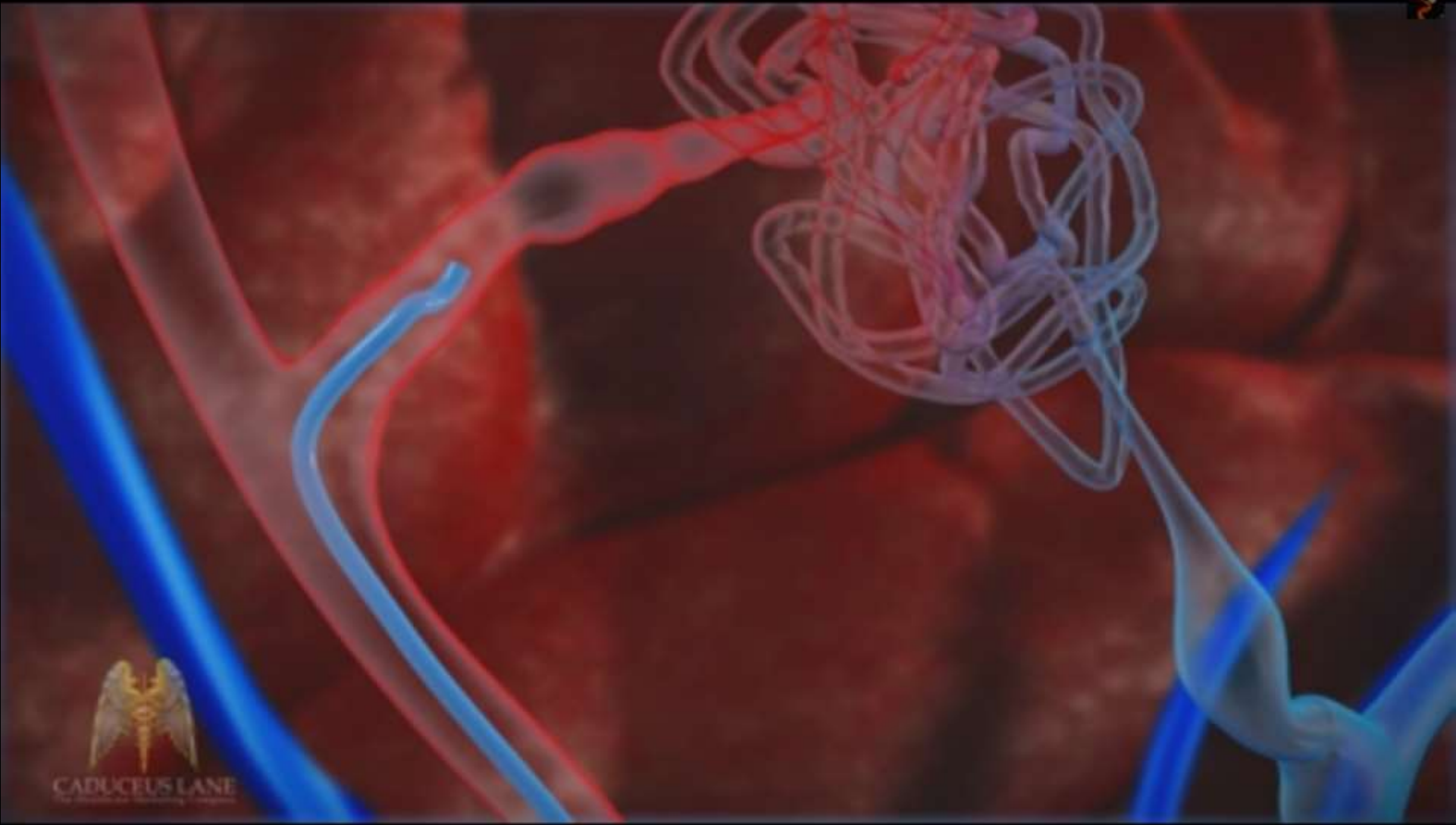


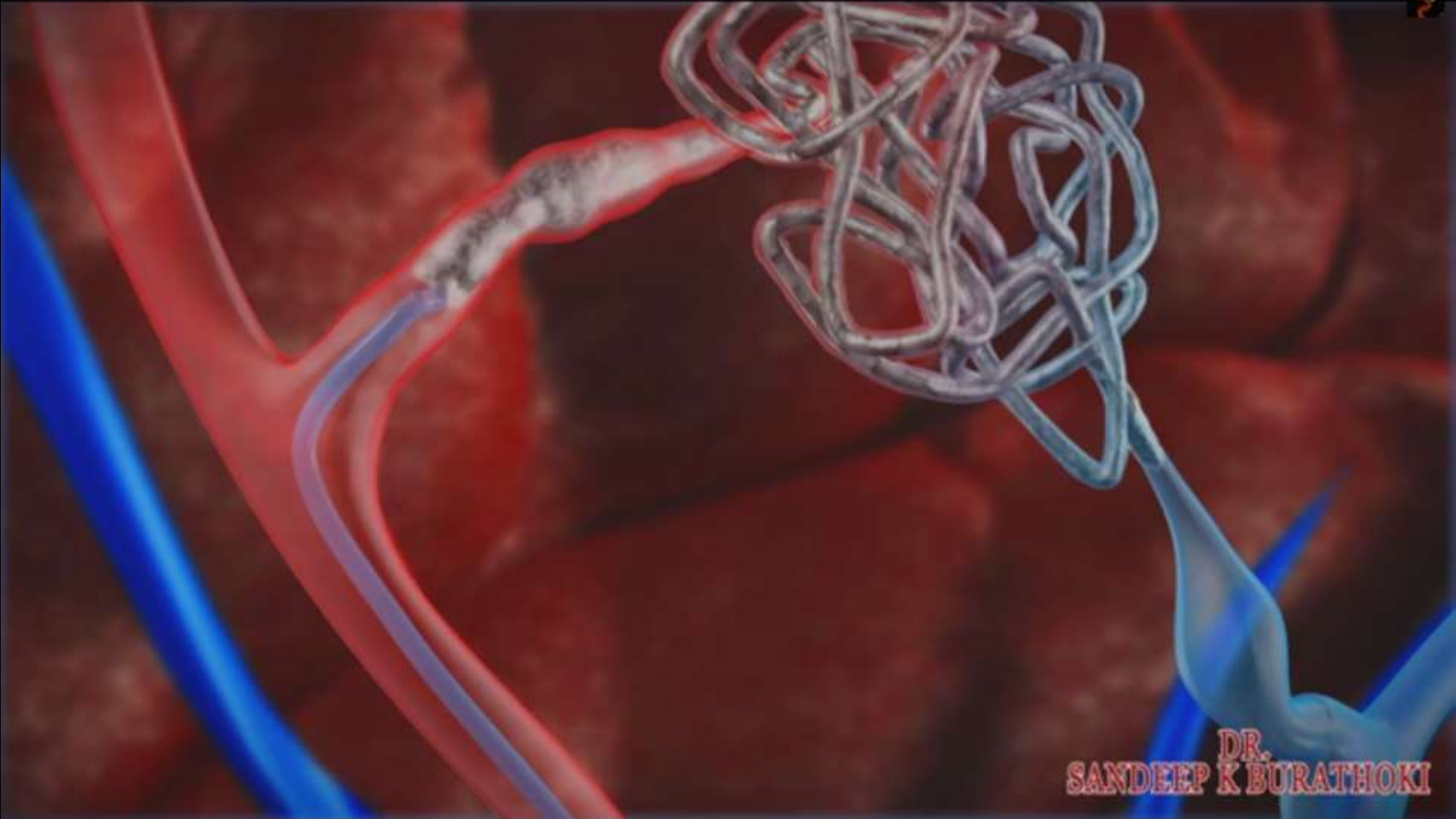




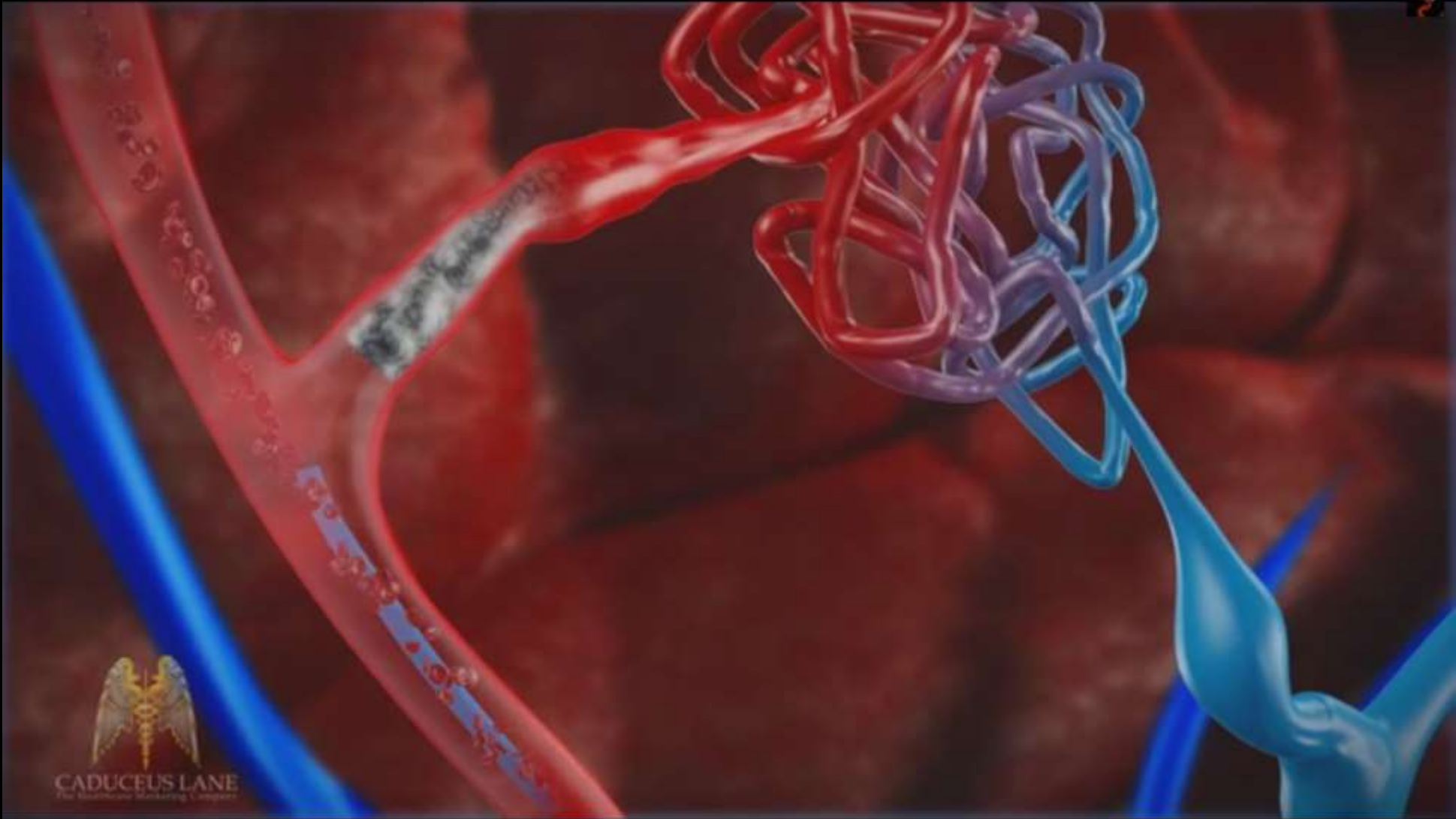
Brain AVM

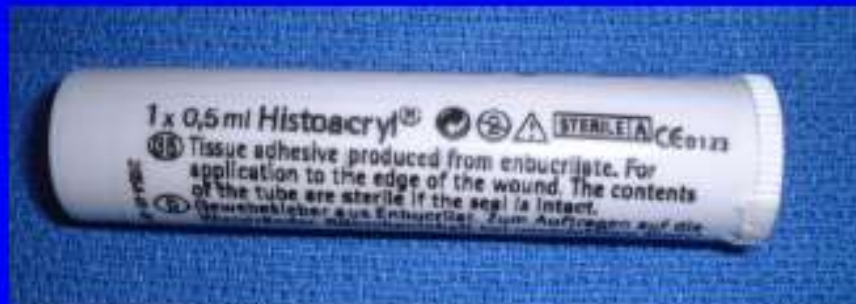






DR.
SANDEEP K BURATHOKI

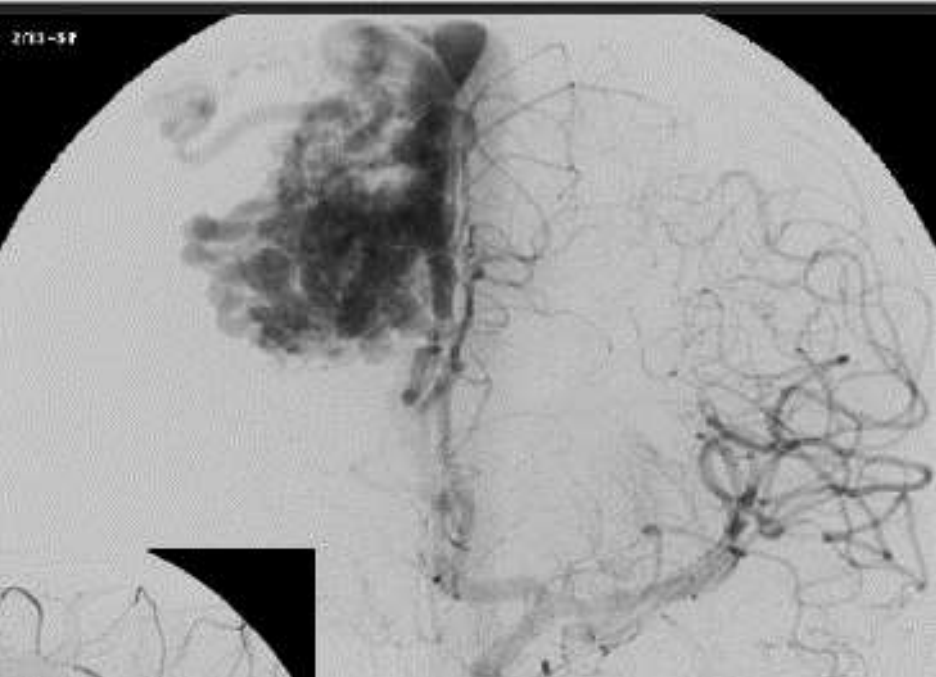




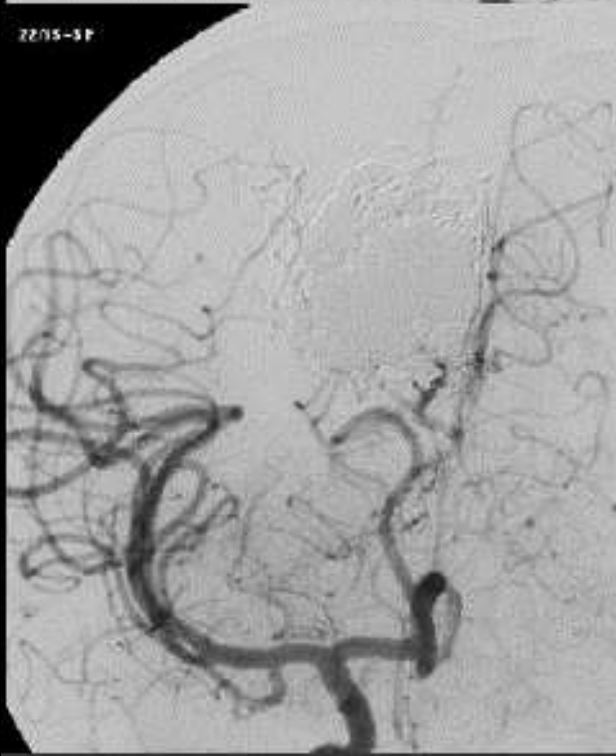
219-SP



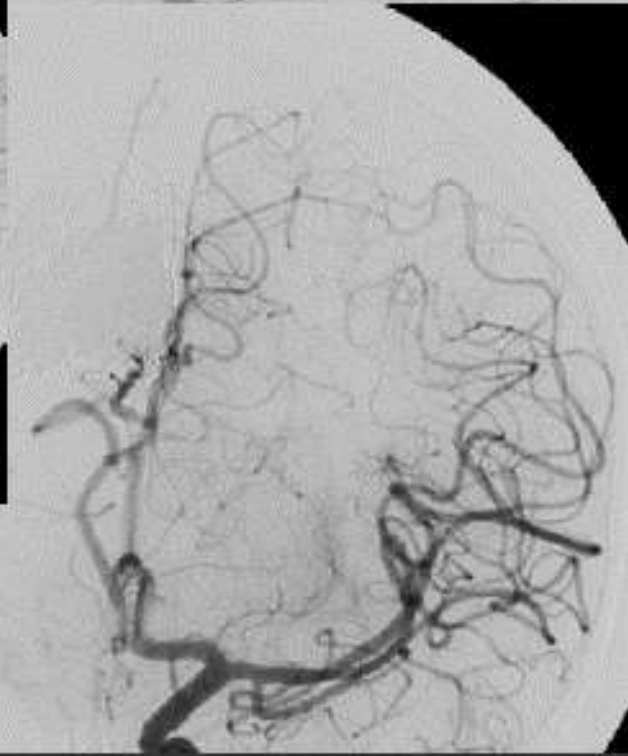
219-SP

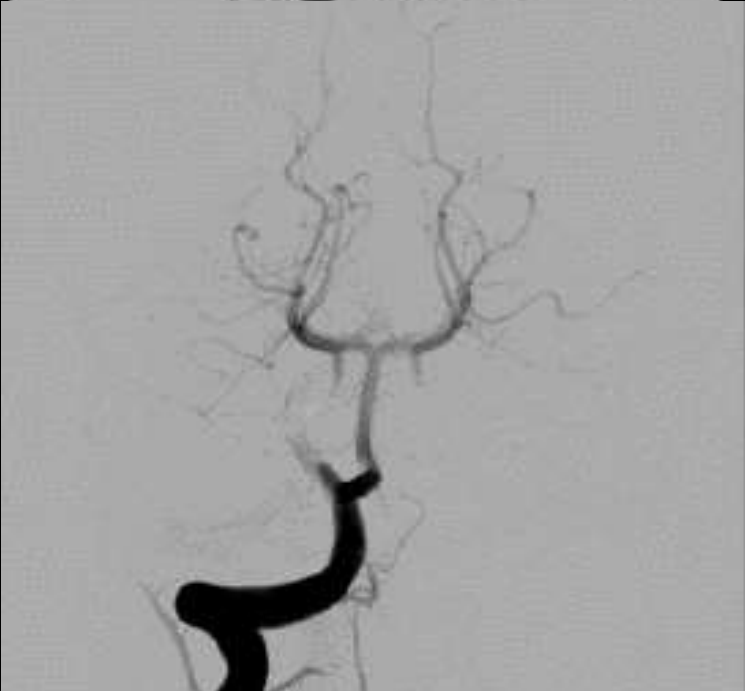


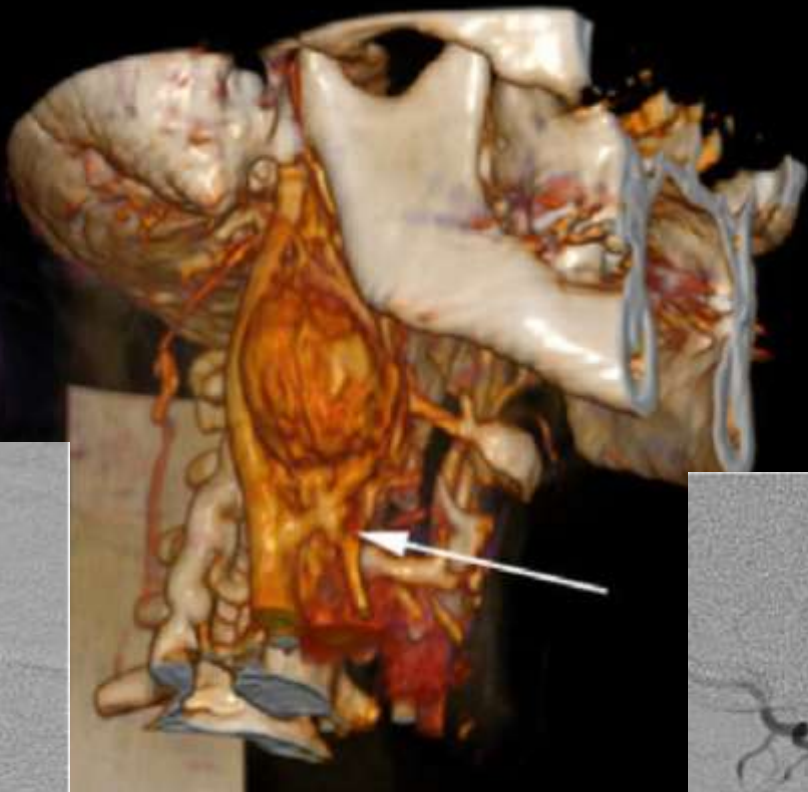
2205-SP



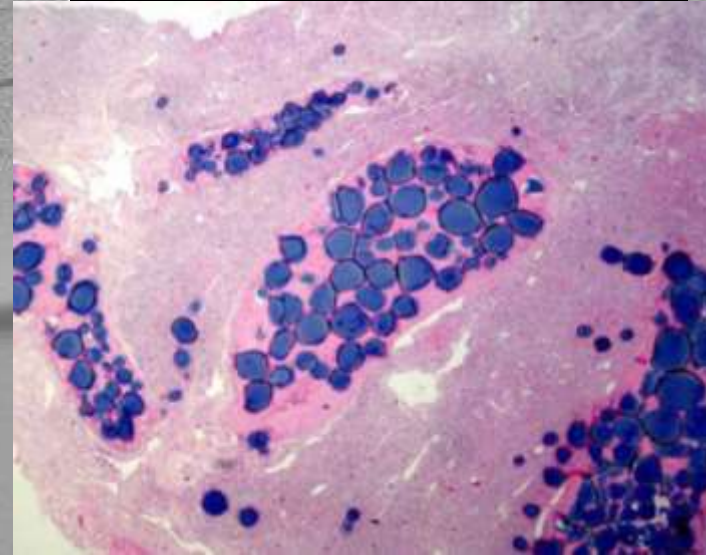
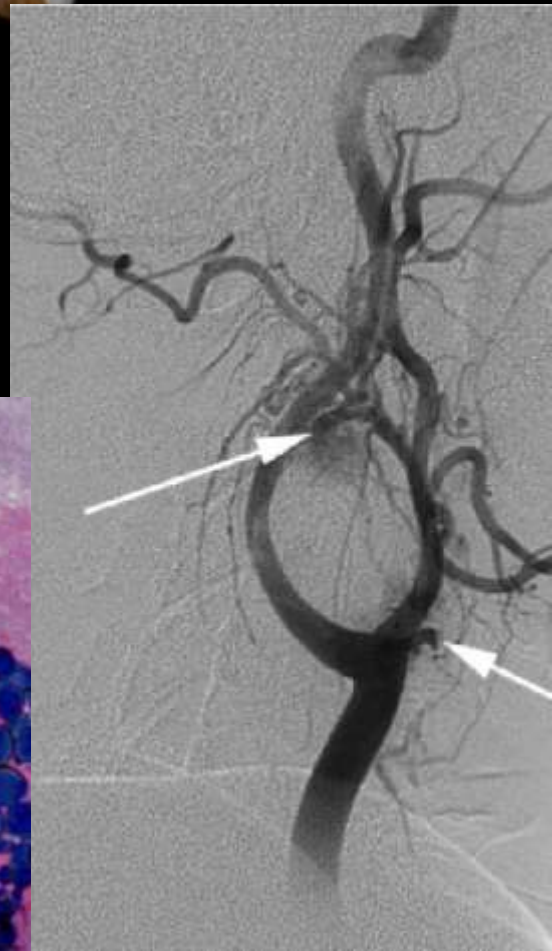
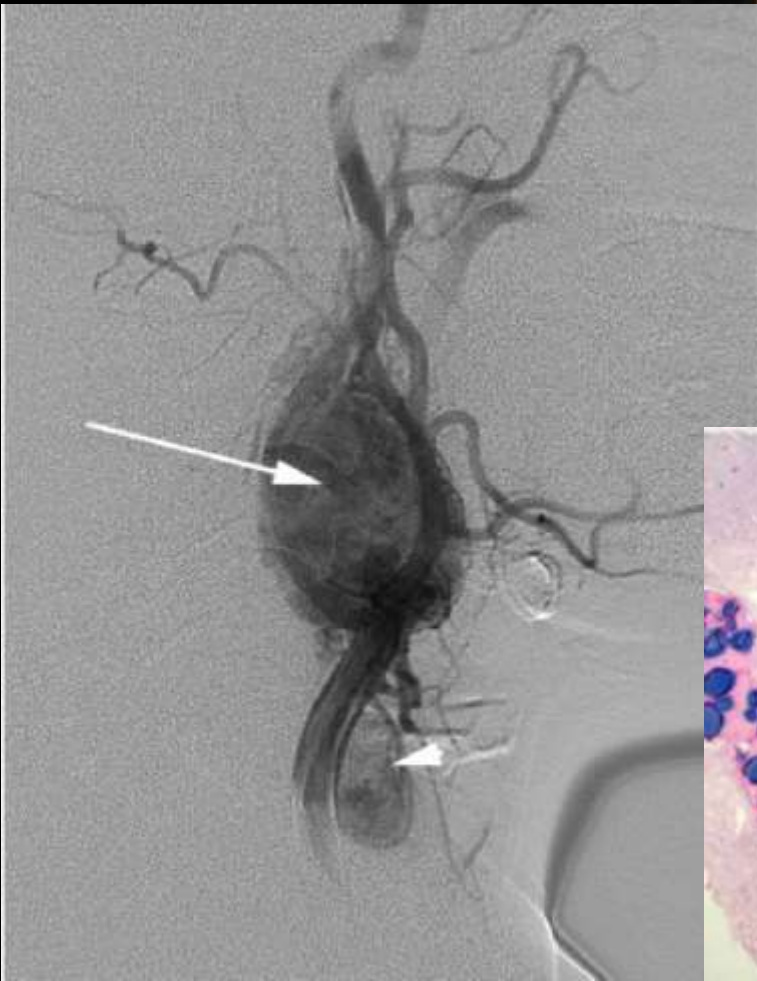
2205-SP







Spln: 59
Tilt: 23

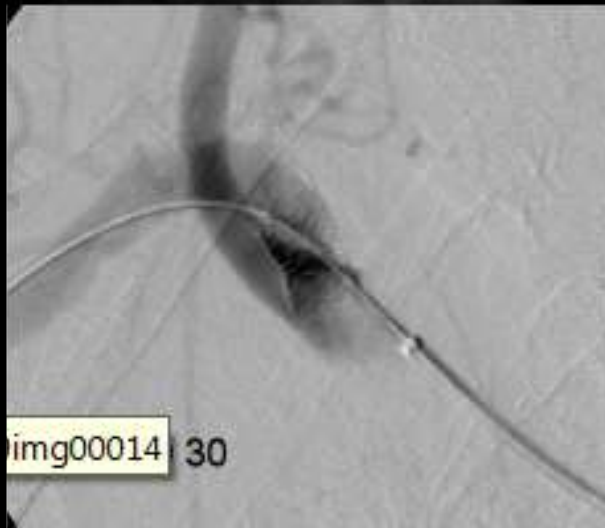
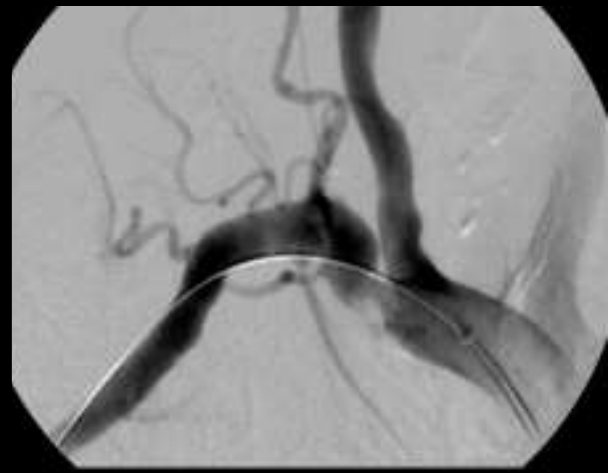
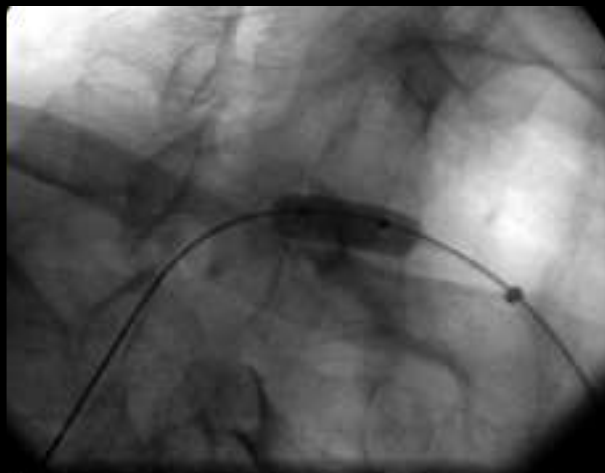
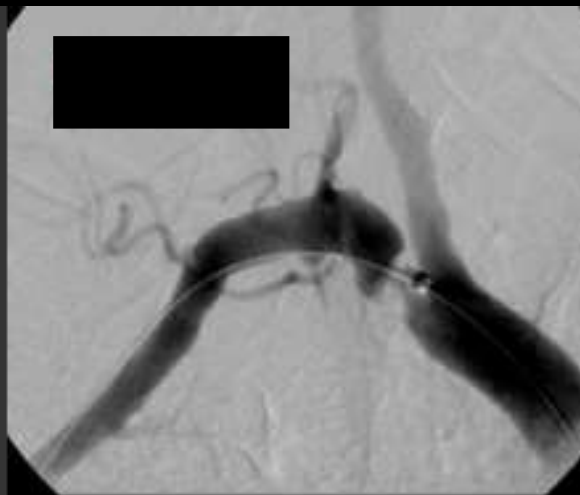


RECANALIZATION

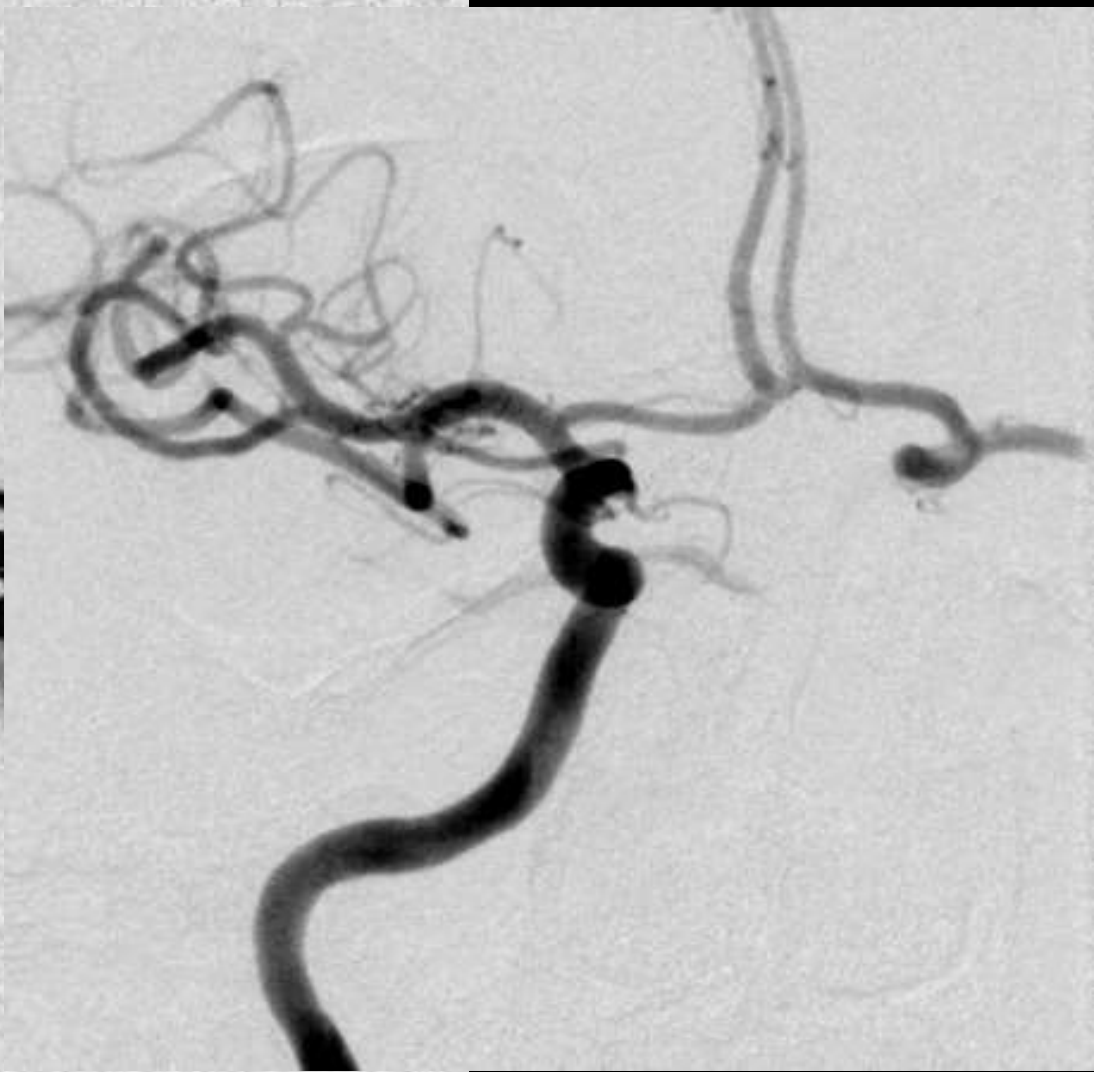




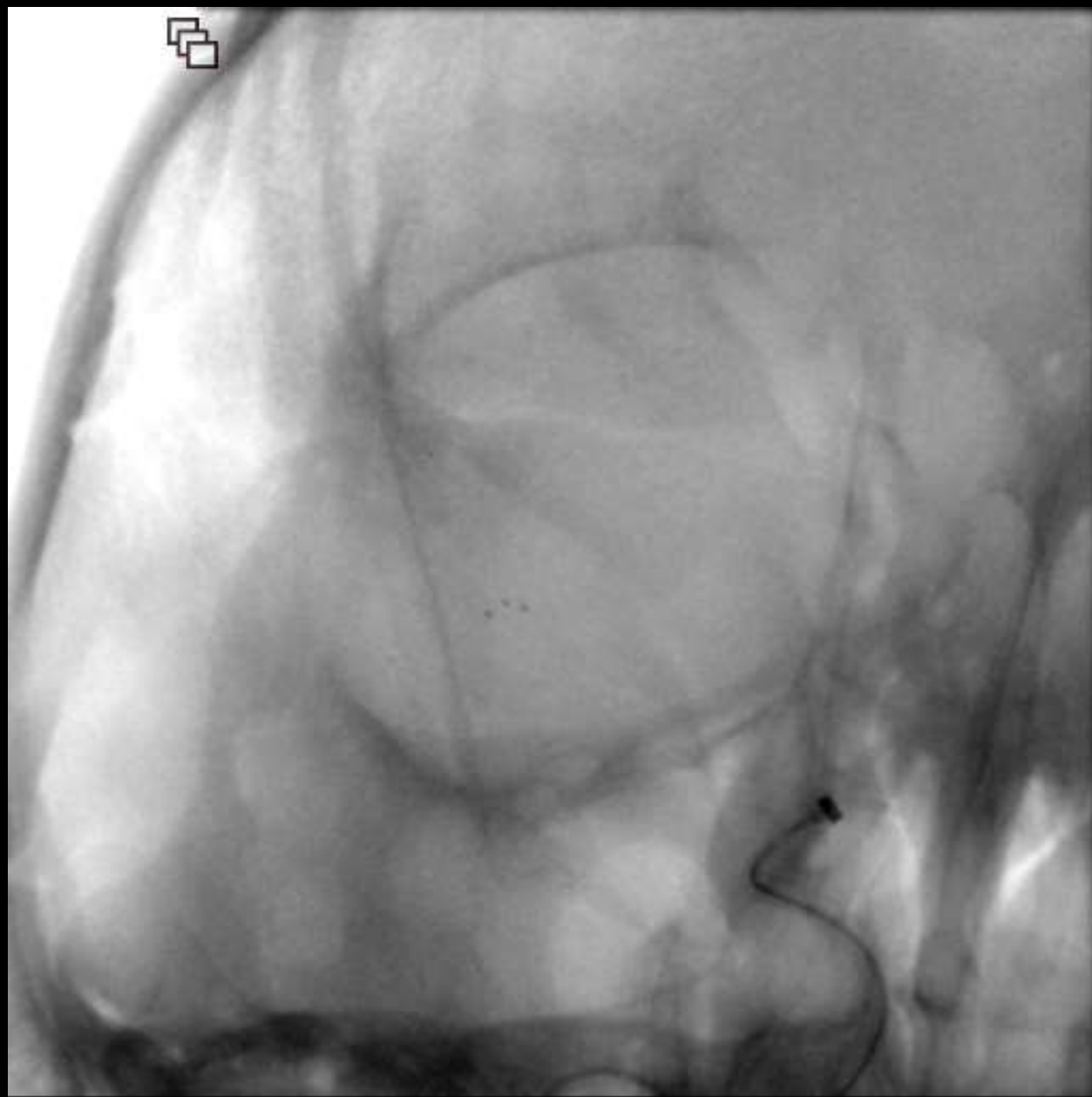


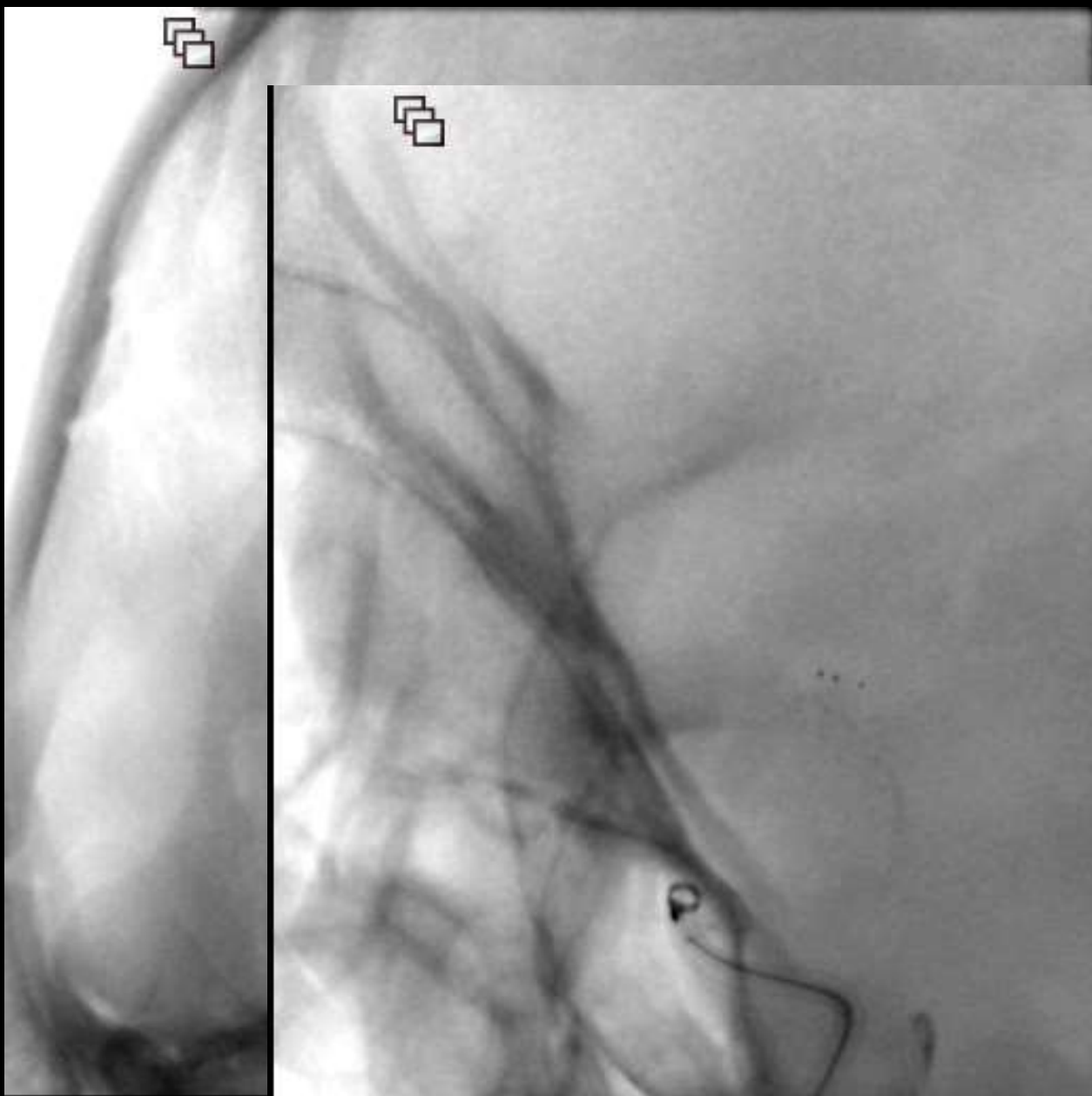


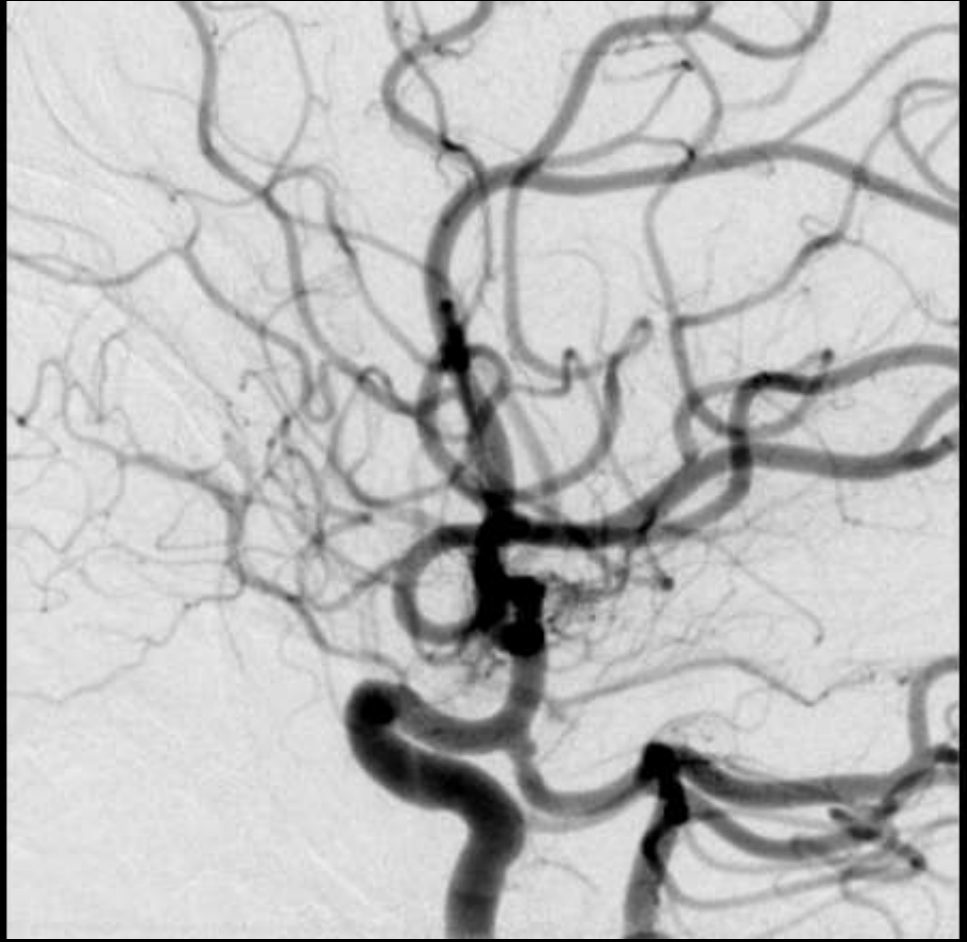






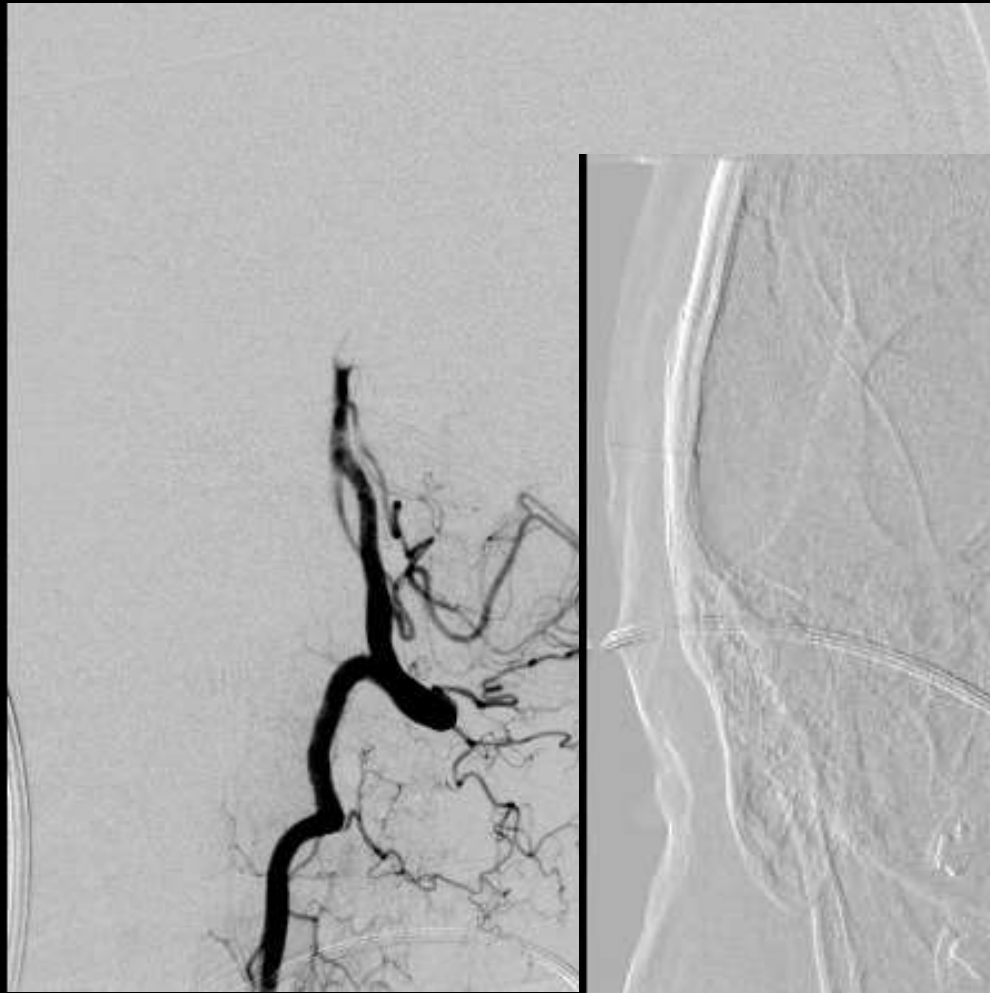


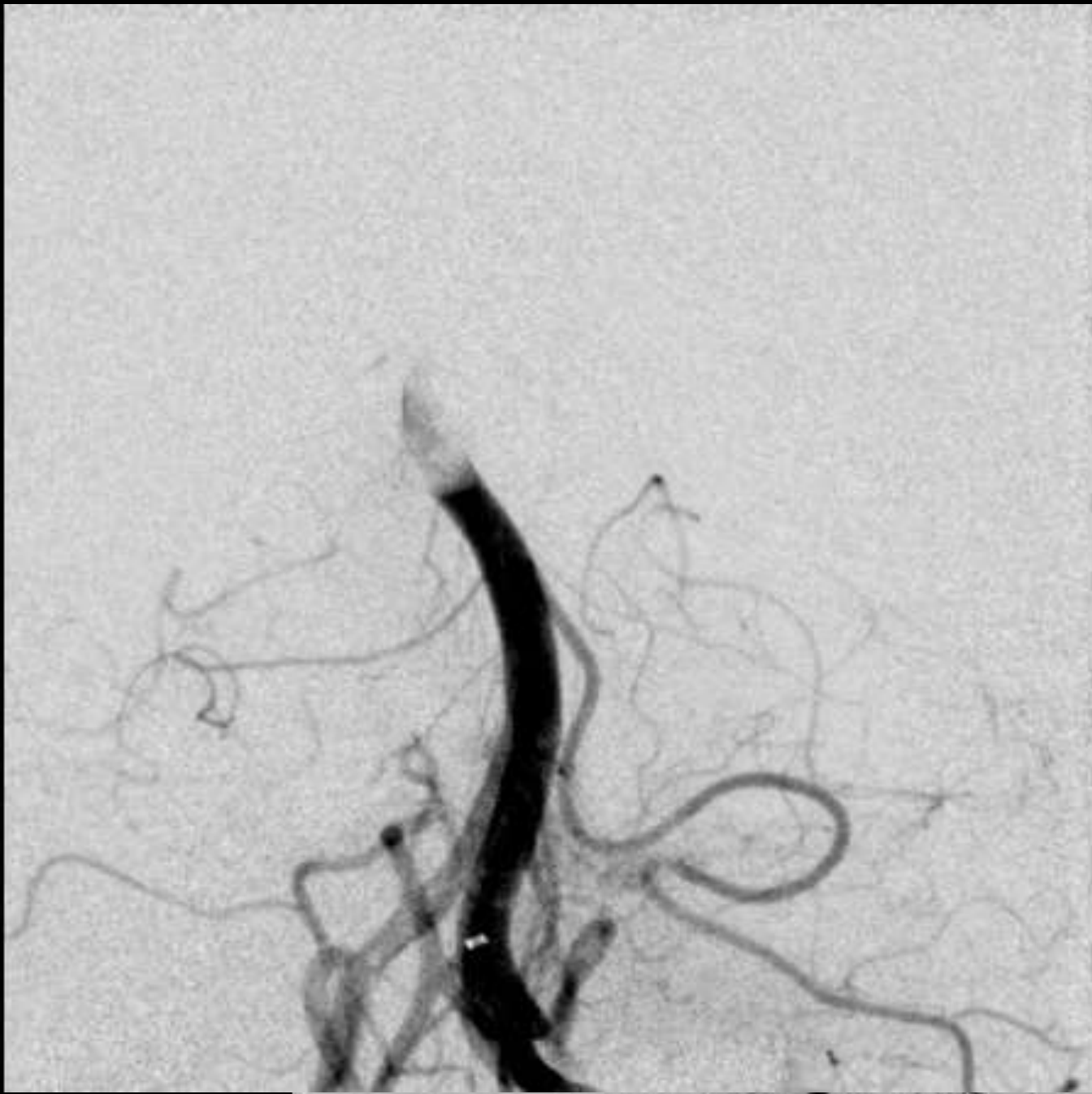






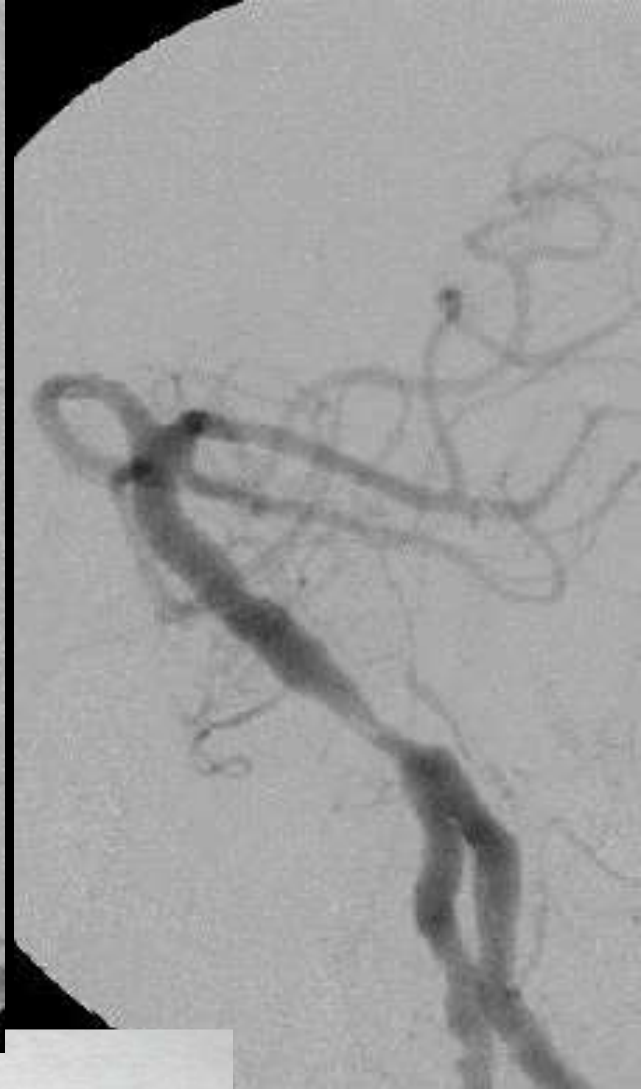


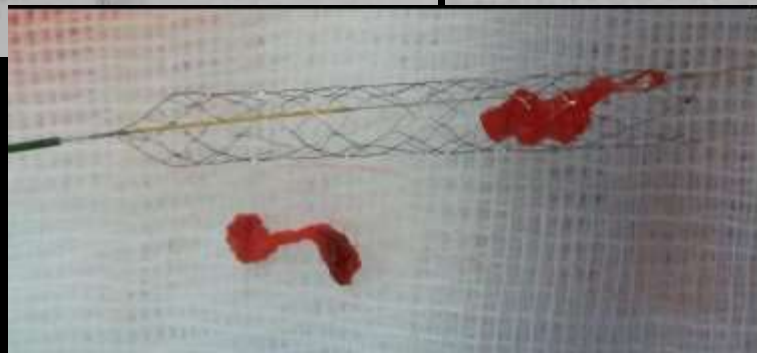
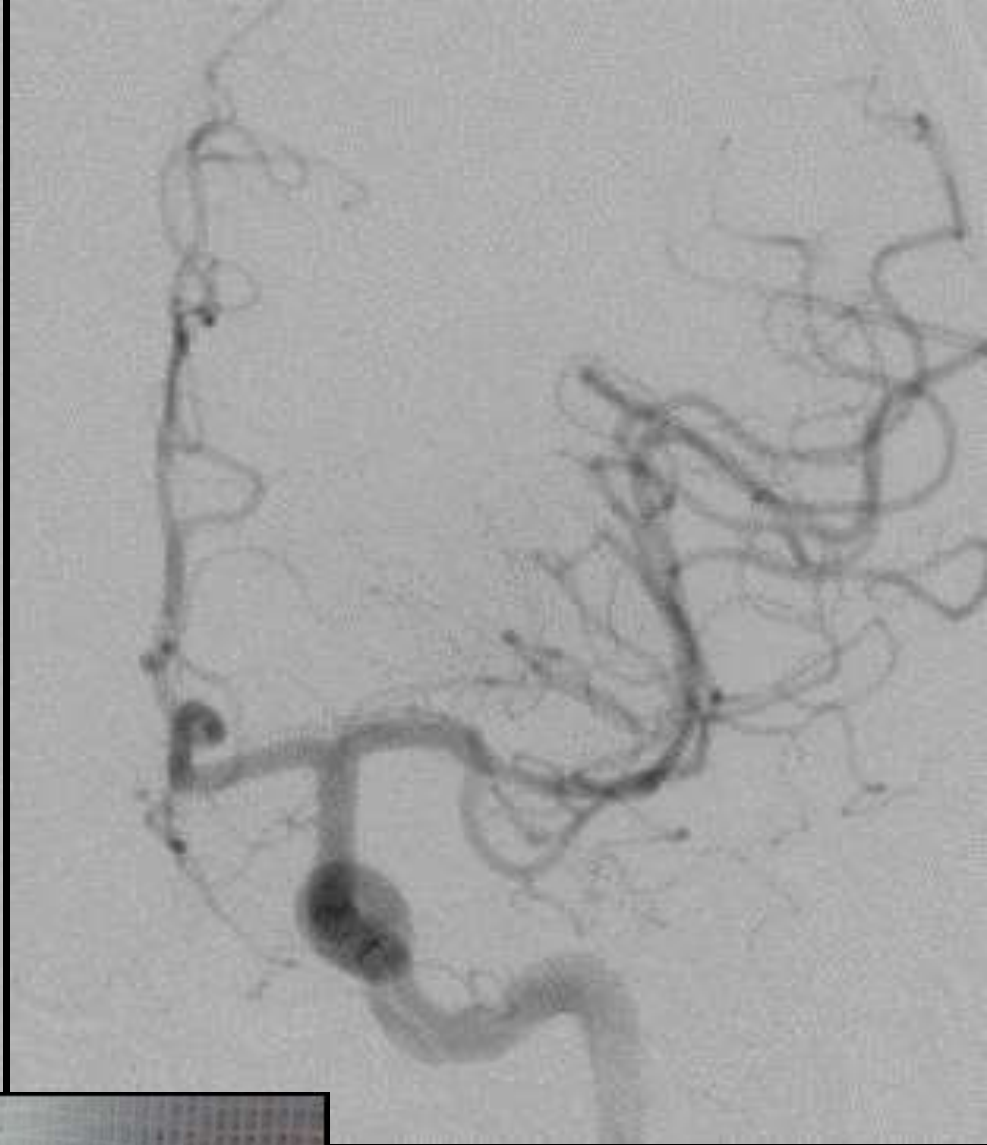
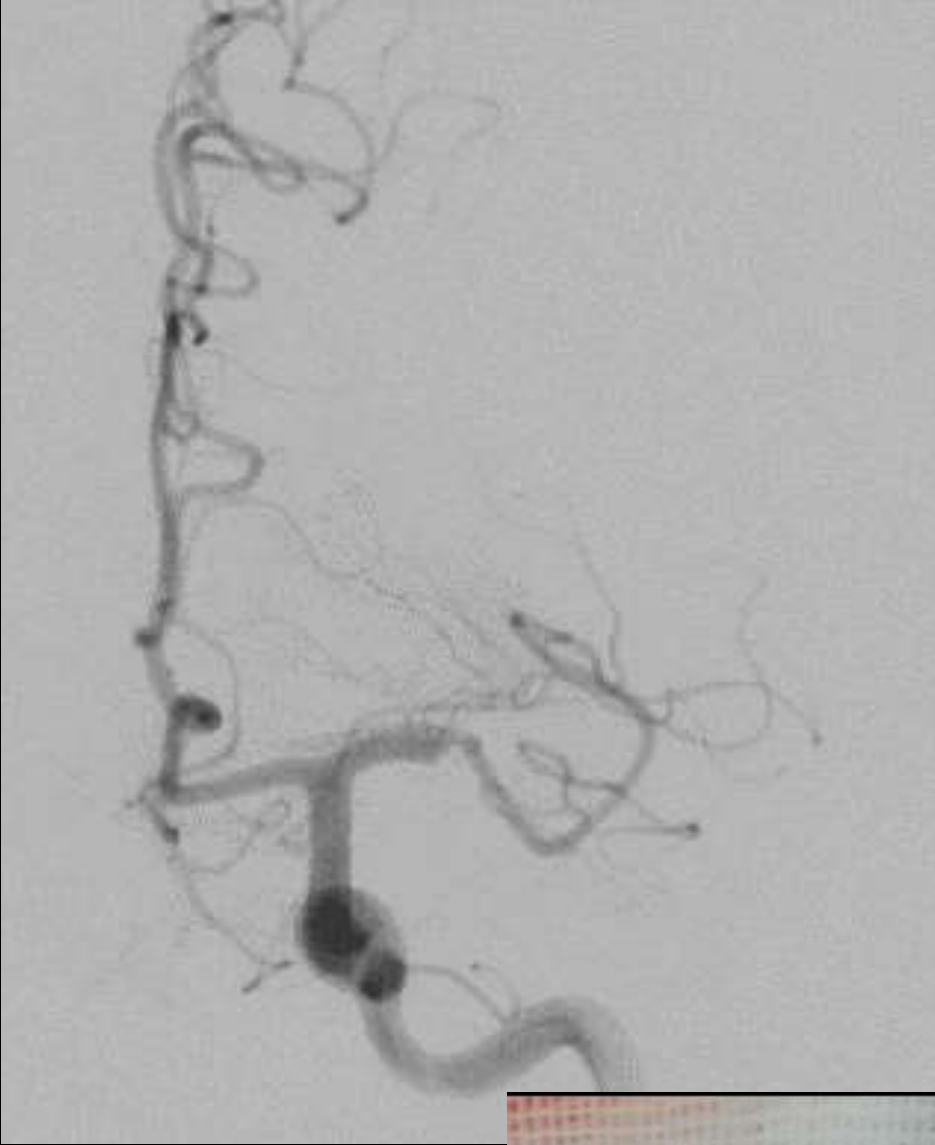








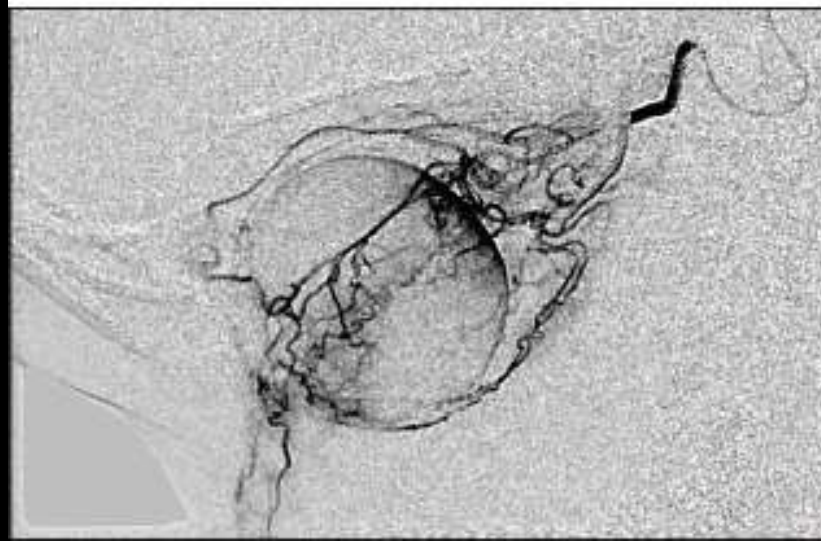
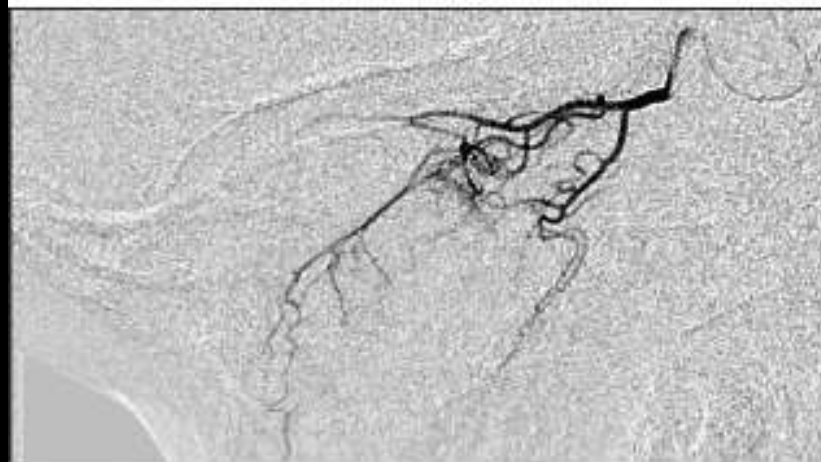




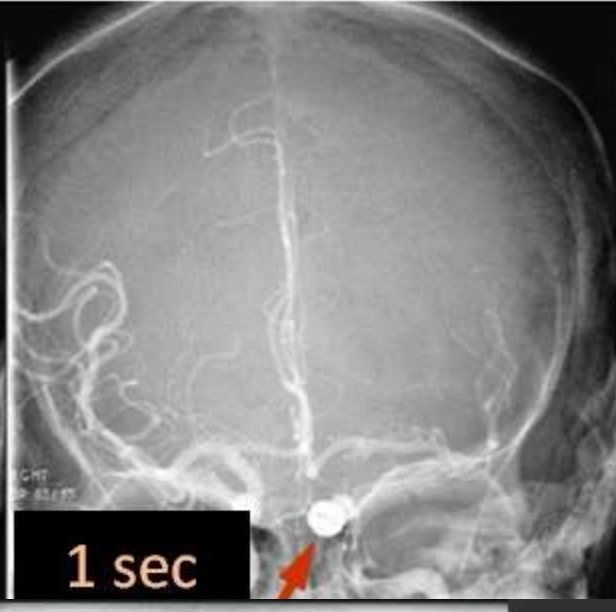
INFUSION

Vasospasm : IA Nimodipin + PTA





TESTING



TEŞEKKÜRLER